



11 Stoneycroft Road

, Earl Shilton, LE9 7JB

£795 Per Calendar Month



A deceptively spacious, traditional styled, extended semi-detached bungalow in popular location, maintained to a high standard with the benefit of UPVC double glazing, gas fired central heating, conservatory extension, kitchen, three bedrooms, UPVC fascias and soffits. TAX BAND C



Porch 3'0" x 2'1" (0.91 x 0.63)

Reception hall

Having obscure UPVC double glazed door, room stat, central heating radiator, airing cupboard off with cylinder immersion heater.

Bathroom (side) 8'7" x 5'9" (2.61 x 1.74)

Having full suite in white comprising panelled bath, pedestal wash hand basin, low flush w.c, extractor fan, central heating radiator.

Lounge (front) 13'3" x 12'3" (4.03 x 3.74)

Having central heating radiator, UPVC double glazed window, coving, power points.

Dining room

Having UPVC double glazed picture window, single central heating radiator, archway leading to:

Kitchen 10'6" x 9'8" (3.2 x 2.95)

Having UPVC double glazed picture window, stainless steel unit, range of base and wall units comprising eight base units and five wall units, associated bevel edged work surfaces, split level gas hob, electric oven, extractor hood, central heating radiator, UPVC double glazed door.

Conservatory

Having UPVC double glazed door, UPVC double glazed windows, double glazed poly-carbonate roof.

Bedroom 1 (front) 12'0" x 10'0" (3.65 x 3.04)

Having UPVC double glazed window, central heating radiator, power points.

Bedroom 2 (rear) 12'0" x 8'9" (3.65 x 2.67)

Having UPVC double glazed picture window, central heating radiator.

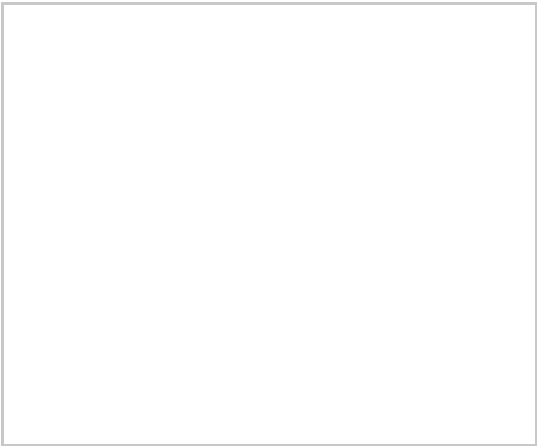
Bedroom 3 (rear) 9'1" x 6'3" (2.77 x 1.90)

Having central heating radiator, UPVC double glazed picture window, power points.

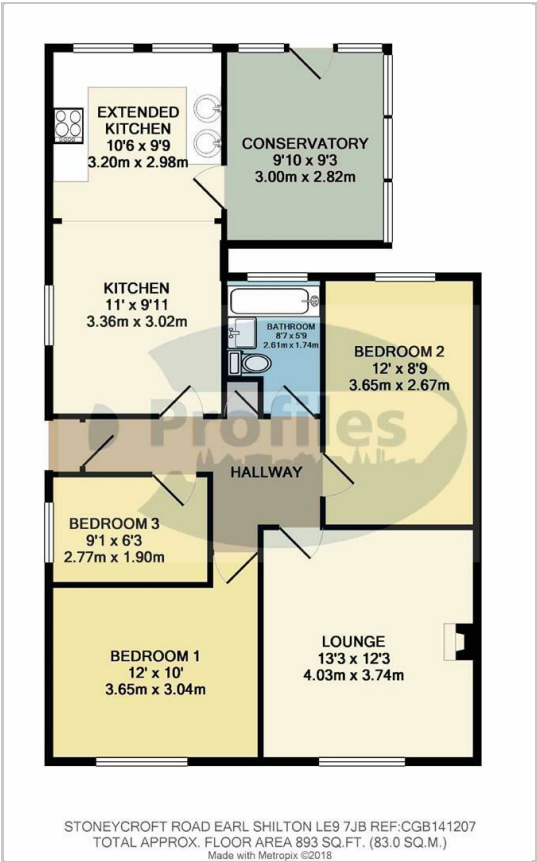
Outside

Having pleasant front garden, driveway for three to four cars, side access to enclosed rear garden, mature shrubs and bushes, lawn.

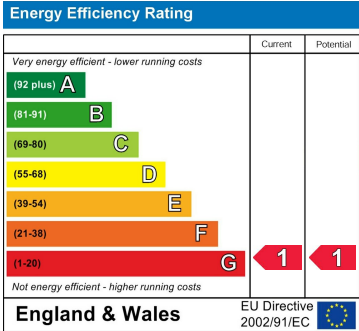
Area Map



Floor Plans



Energy Efficiency Graph



These particulars, whilst believed to be accurate are set out as a general outline only for guidance and do not constitute any part of an offer or contract. Intending purchasers should not rely on them as statements of representation of fact, but must satisfy themselves by inspection or otherwise as to their accuracy. No person in this firms employment has the authority to make or give any representation or warranty in respect of the property.