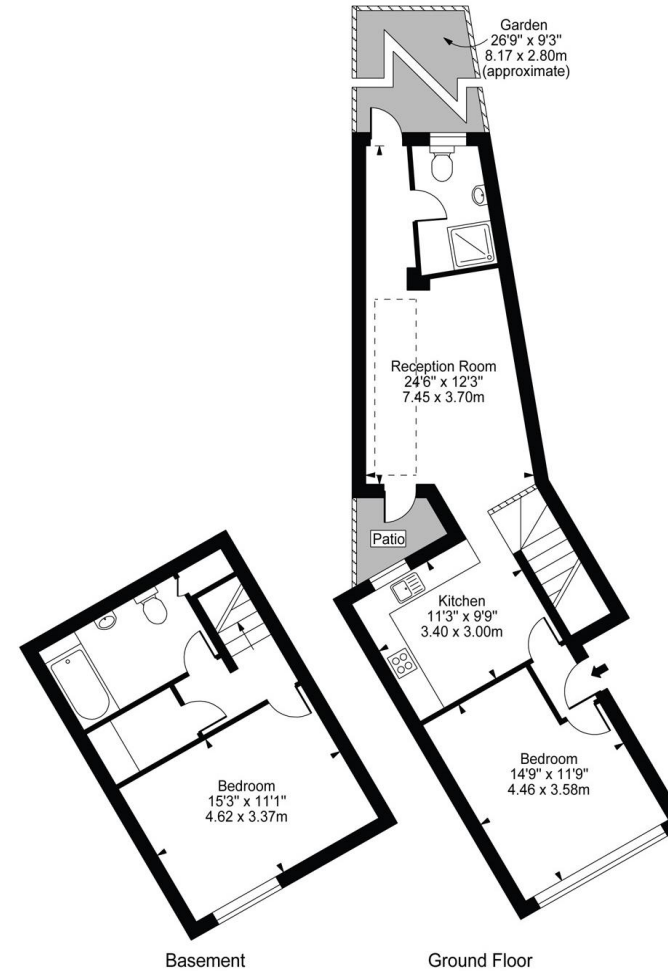






Approx. Gross Internal Area 941 Sq Ft - 87.41 Sq M



Beresford Residential are pleased to offer this superb two double bedroom flat in central Camberwell. This superbly designed conversion is laid out over the ground and lower ground floors of this imposing Victorian property. The front bedroom is light and airy with high ceilings and neutral décor. The stunning kitchen is a great size and flows nicely into the large reception room. Towards the rear of the property is the first bathroom and access to a well-kept private garden. Descending the stairs onto the lower ground floor you enter a room that feels like a large and spacious master suite complete with utility room and large second bathroom.

[beresfordresidential.com](http://beresfordresidential.com)  
020 7358 7979

