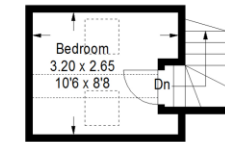
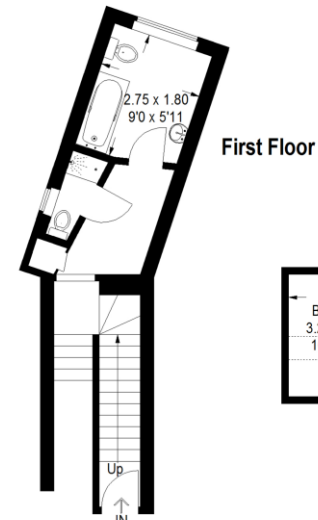


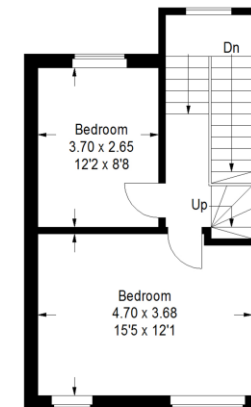
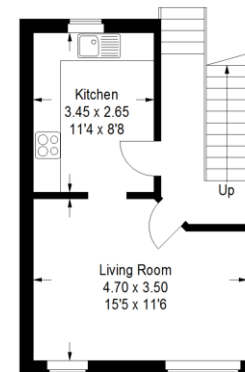




Approximate Gross Internal Area = 97.6 sq m / 1050 sq ft



Ground Floor



Beresford Residential are pleased to offer this superb three double bedroom flat in central Camberwell. The conversion has been undertaken to a very high standard and the property has been superbly designed. On the first floor there are two large bathrooms, a modern kitchen and a large reception room that benefits from stylish touches throughout. On the second floor the master bedroom is light and airy with high ceilings and neutral décor. The second bedroom is a good sized double. On the third floor, the room feels like a large and spacious master suite. Marketed chain free, this property is ideally suited to a first time buyer, or buy-to-let investor.

beresfordresidential.com
020 7358 7979

