

# TATES

Residential Sales & Lettings



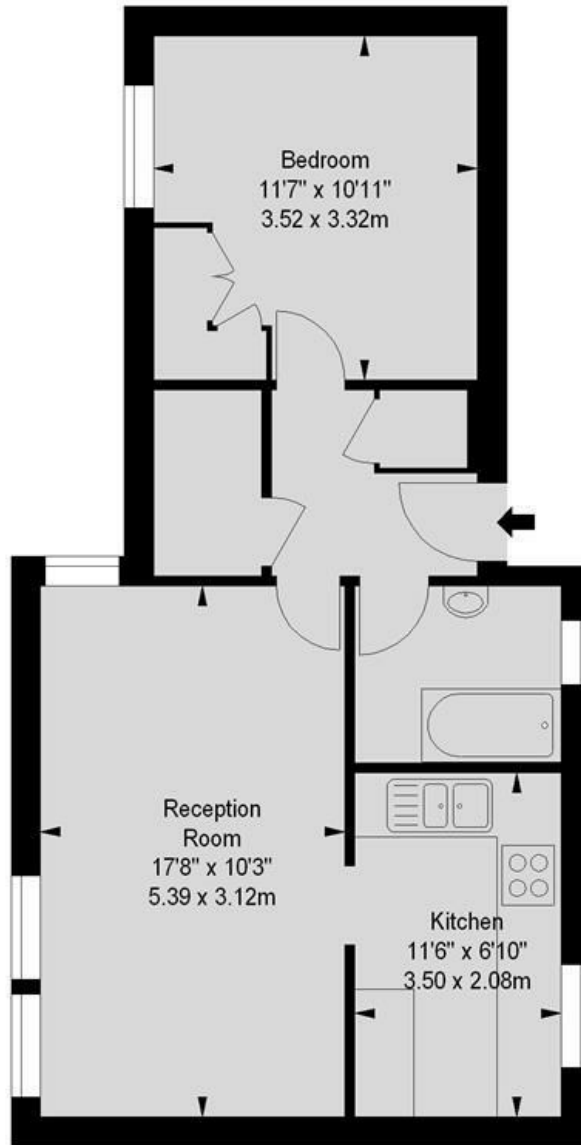
## Colet Gardens, London W14 9DL

**£480,000**

- Newly Refurbished One Bed Apartment
- Share Of Freehold
- Communal Gardens
- Close to Hammersmith Tube Station (Circle, Hammersmith & City, District and Piccadilly line)
- Energy Efficiency Rating Band D
- Bright and Airy
- Gated Development
- 24 hr Security
- Close to Barons Court (District and Piccadilly line)

# Colet Gardens, W14

Approximate gross internal area  
507 sq ft / 47.10 sq m



Third Floor

Illustration For Identification Purposes Only. Not To Scale  
\*Floorplan Drawn According To RICS Guidelines

Whilst these particulars are believed to be correct, no guarantee can be given for the measurements, appliances or services. It is our recommendation that all are tested. These are not intended to form part of any contract. Tate's accept no responsibility for their accuracy.

Energy Efficiency Rating		Current	Potential
Very energy efficient - lower running costs			
(92 plus) A			
(81-91) B			
(69-80) C			
(55-68) D		65	75
(39-54) E			
(21-38) F			
(1-20) G			
Not energy efficient - higher running costs			
England & Wales		EU Directive 2002/91/EC	

135 Hammersmith Rd London W14 0QL.  
T. 020 7602 6020 F. 020 7602 9522  
mail@tatesestates.co.uk  
tatesestates.co.uk

Tates (Agents) Ltd. Registered in England and Wales No. 2356337  
Registered Office: 4th Floor Imperial House, 15 Kingsway London WC2B 6U

