



Chivenor Grove, KT2

£989,000

This detached family home, with off street parking, is perfectly located close to outstanding primary and secondary schools.

The ground floor, which has been intelligently extended, has a large kitchen/ dining room, utility room, downstairs W.C, versatile study and a bright reception room ideal for entertaining which leads to the rear garden.

On the first floor there are three bedrooms and two bathrooms including the master-suite and in the large loft is another bedroom as well as lots of storage. Modern solar panels ensure that the utility bills remain economical!

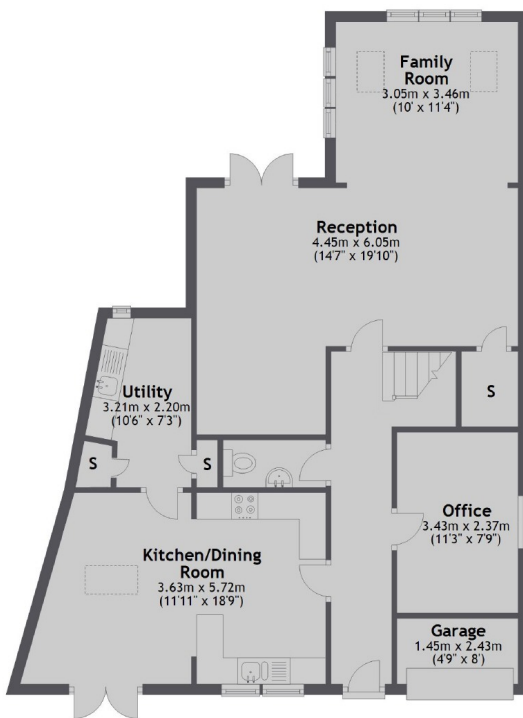
Chivenor Grove could not be better situated for local schools including Grey Court, Fern Hill and The German School as well as the River Thames, Richmond Park and Ham Common. There are fantastic transport links as both Kingston and Richmond train stations are within easy reach.

- Detached Family Home • Four Bedrooms • Off Street Parking •
- Outstanding Local Schools • Fantastic Transport Links • Modern Solar Panels •

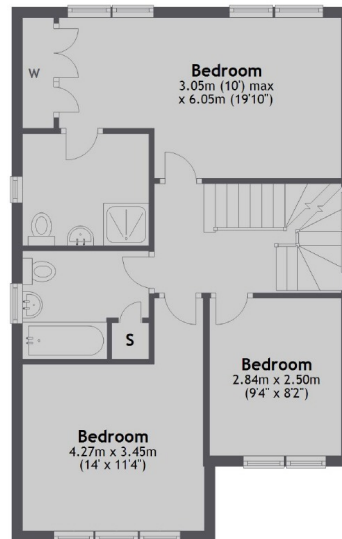
SNELLERS

ESTATE AGENTS

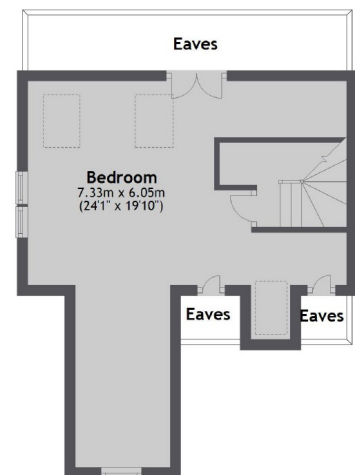
Ground Floor



First Floor



Second Floor



Total area: approx. 170.2 sq. metres (1831.5 sq. feet)

Snellers Kingston Sales
17-21 Richmond Road
Kingston
KT2 5BW
020 8546 8715
kingstonsales@snellers.co.uk

Energy Rating: C We aim to make our particulars both accurate and reliable. However they are not guaranteed; nor do they form part of an offer or contract. If you require clarification on any points then please contact us, especially if you're traveling some distance to view. Please note that appliances and heating systems have not been tested and therefore no warranties can be given as to their good working order