

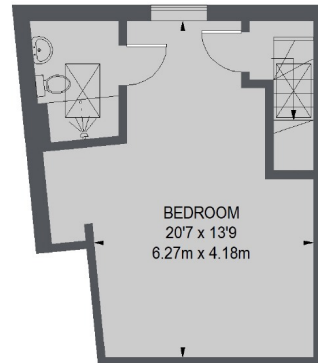


Broughton Road, SW6

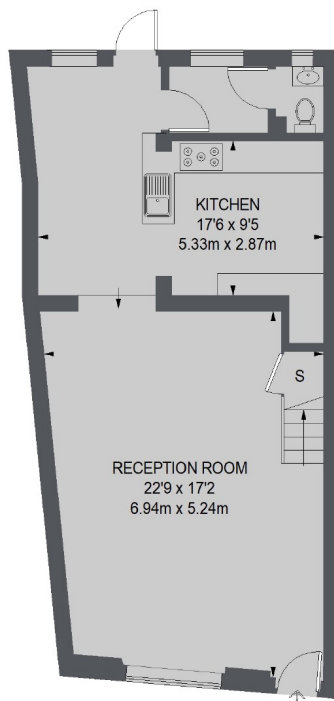
£850 pw (£3,683 pcm)

This four bedroom family home is spread over three floors and is in the heart of Sands End with Eel Brook Common and South Park close by. This property is bright and spacious throughout with a large reception room and a modern eat-in kitchen with doors leading to a private decked garden and stairs to the first floor terrace.

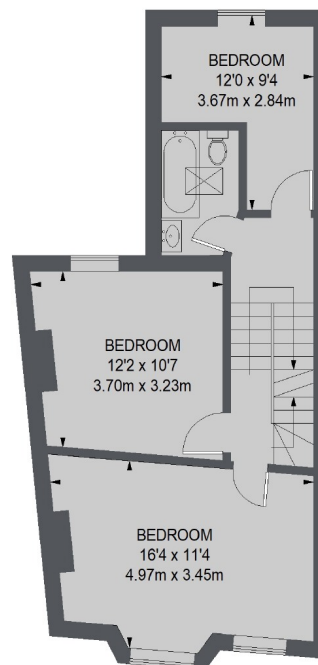
Broughton Road is in the Sands End area of Fulham. There are many bus routes into Fulham Broadway, Chelsea and Battersea. The closest stations are Imperial Wharf (Overground) and Fulham Broadway (District Line).



SECOND FLOOR



GROUND FLOOR



FIRST FLOOR

TOTAL APPROX. FLOOR AREA
1467 SQ. FT. (136.28 SQ. M.)

Chard Fulham
5 Harwood Road,
London, SW6 4QP
020 7384 1400
fulhamlettings@chard.co.uk

Energy Rating: D. We aim to make our particulars both accurate and reliable. However they are not guaranteed; nor do they form part of an offer or contract. If you require clarification on any points then please contact us, especially if you're traveling some distance to view. Please note that appliances and heating systems have not been tested and therefore no warranties can be given as to their good working order.