

ROKSTONE



Chiltern Street Marylebone W1U

This newly refurbished apartment comprises of two double bedrooms, two bathrooms (one en-suite) and spacious kitchen/reception room. This impressive mansion block benefits from a residents gym (membership not included) and a porter looking after the building.

Portman Mansions is ideally located on Chiltern Street which offers a wonderful selection of boutique shops and restaurants including the renowned Chiltern Firehouse. Baker Street tube station (Hammersmith & City, Bakerloo, Jubilee, Circle and Metropolitan, Zone 1) is under a minute walk from the property with easy access to all corners of London including the City and West End. Marylebone High Street is also nearby with a further selection of restaurants, pubs, and supermarkets including a large Waitrose.

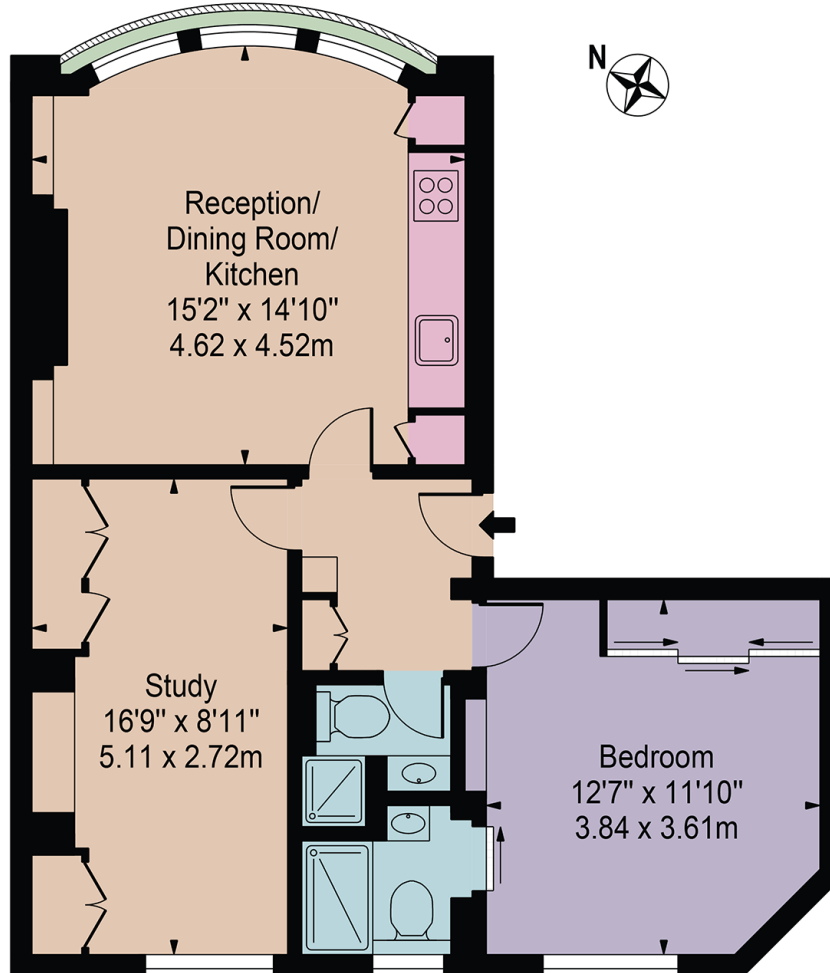
Price £945 pw



Olivia McSweeney | Head of Lettings
D: 020 3219 5679 | M: 07584633058 | E: olivia@rokstone.com
5 Dorset Street, London, W1U 6QJ

Portman Mansions

Approx. Gross Internal Area 628 Sq Ft - 58.34 Sq M



Ground Floor

For Illustration Purposes Only - Not To Scale

This floor plan should be used as a general outline for guidance only and does not constitute in whole or in part an offer or contract. Any intending purchaser or lessee should satisfy themselves by inspection, searches, enquiries and full survey as to the correctness of each statement. Any areas, measurements or distances quoted are approximate and should not be used to value a property or be the basis of any sale or let.