

Chard

Lettings



Abbotsbury Close, W14

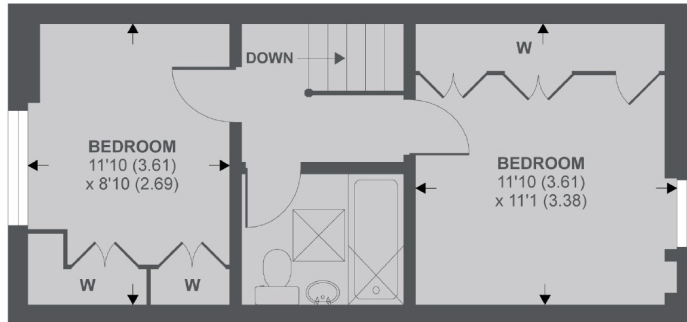
£875 pw (£3,792 pcm)

This three bedroom, two bathroom family home is spread over three floors and offers the best living and entertainment space. The property has a large reception room with space for dining and doors leading to a balcony. There is also a separate kitchen and off-street parking.

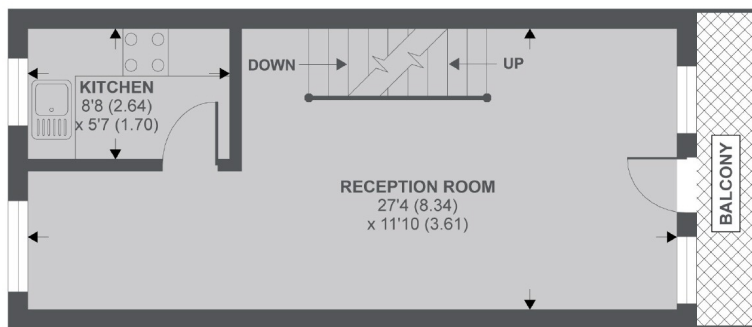
Abbotsbury Close is conveniently located between Holland Park and Kensington High Street with many shops, restaurants and amenities close by. The property is also moments away from Holland Park and its famous Japanese Kyoto Garden. Holland Park underground station, Notting Hill and Knightsbridge are within easy reach.

Chard

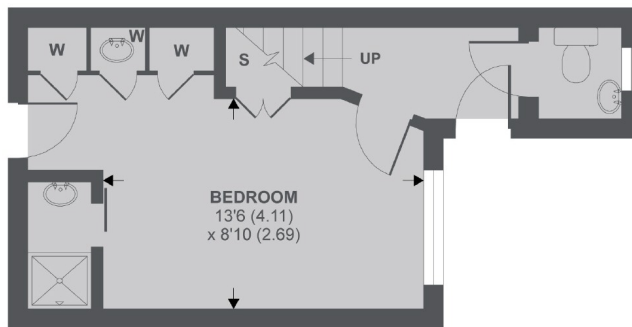
Lettings



2nd Floor



1st Floor



Ground Floor

APPROX FLOOR AREA 875 SQ.FT 81.2 SQ.M

Copyright nichecom.co.uk 2019 REF : 485441

Chard Fulham
5 Harwood Road,
London, SW6 4QP
020 7384 1400
fulhamlettings@chard.co.uk

Energy Rating: . We aim to make our particulars both accurate and reliable. However they are not guaranteed; nor do they form part of an offer or contract. If you require clarification on any points then please contact us, especially if you're traveling some distance to view. Please note that appliances and heating systems have not been tested and therefore no warranties can be given as to their good working order.