

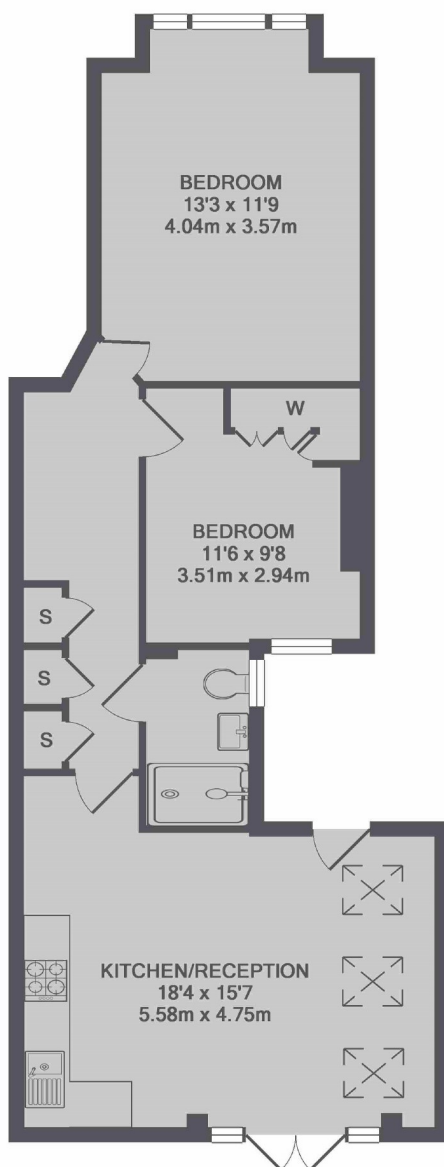


Midmoor Road, SW12

£580,000

A ground floor Victorian maisonette two double bedroom extended with an open plan kitchen opening on a private garden in the heart of the Hyde Farm Estate.

- Victorian Maisonette
- No Onward Chain
- Two Double Bedroom
- Hyde Farm Estate
- Private Garden
- Share Of Freehold



TOTAL APPROX. FLOOR AREA 669 SQ.FT. (62.1 SQ.M.)

Jacksons Balham
8-11 Balham Station Road
London
SW12 9SG
020 8675 6565
balham.sales@jacksonsestateagents.com

Energy Rating: D We aim to make our particulars both accurate and reliable. However they are not guaranteed; nor do they form part of an offer or contract. If you require clarification on any points then please contact us, especially if you're traveling some distance to view. Please note that appliances and heating systems have not been tested and therefore no warranties can be given as to their good working order.