



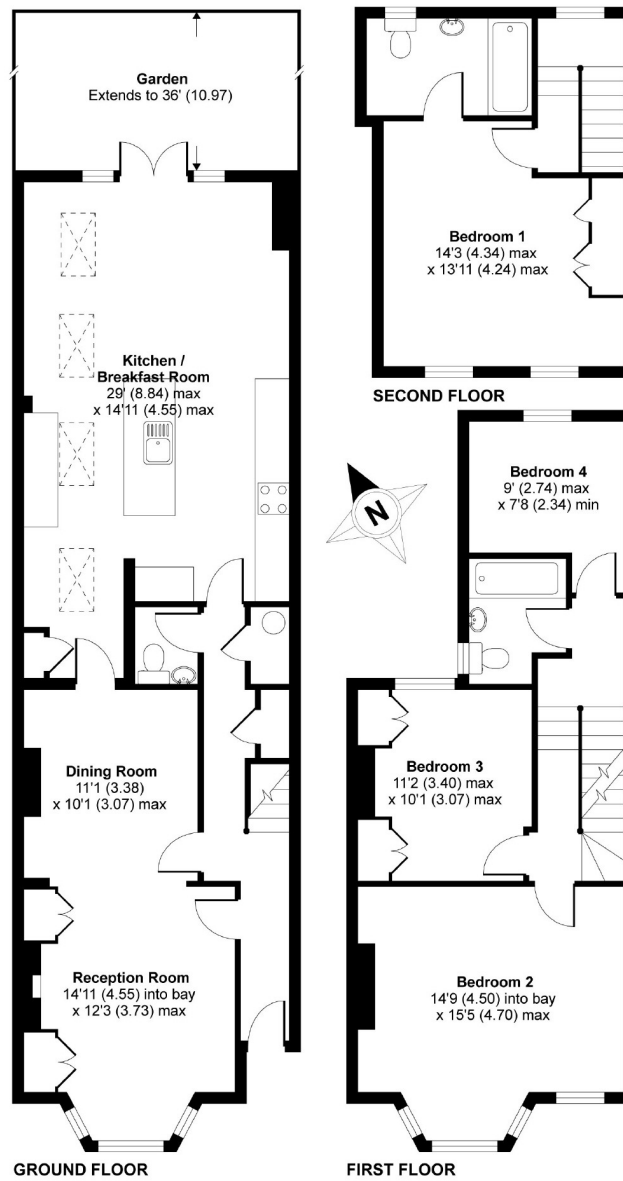
Ormeley Road, SW12

£3,700 PCM

A beautifully presented four bedroom, two bathroom Victorian house which is suitable for professional sharers or a family.

- Terraced House
- Reception Room
- Kitchen Breakfast Room
- Four Double Bedrooms
- Two Bathrooms
- Private Garden

For further information on the costs associated with renting a property, please pop into our office or visit our website.



Ormeley Road Balham London SW12

Copyright nichecom.co.uk 2008 Produced for Jacksons the Independent Estate Agents REF : LE080000167

Jacksons Balham
 8-11 Balham Station Road
 London
 SW12 9SG
 020 8675 6565
balham.lettings@jacksonsestateagents.com

Energy Rating: C We aim to make our particulars both accurate and reliable. However they are not guaranteed; nor do they form part of an offer or contract. If you require clarification on any points then please contact us, especially if you're traveling some distance to view. Please note that appliances and heating systems have not been tested and therefore no warranties can be given as to their good working order.