

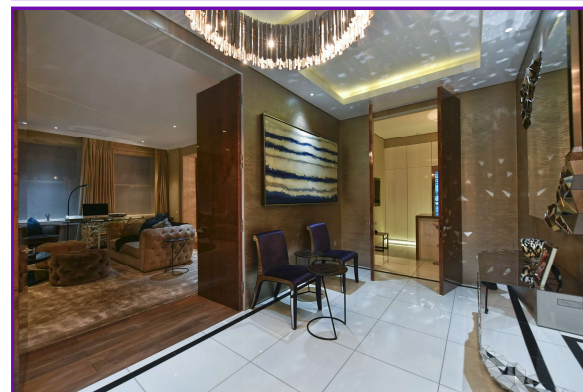
ROKSTONE



Rutland Gardens Knightsbridge

A beautiful three bedroom raised ground floor apartment on a private road. The flat benefits from a porter and parking (by separate negotiation). Approximately 209.6 sq m (2,256 sq ft). This grand and spacious lateral apartment is situated on the raised ground floor of a prestigious apartment block in Knightsbridge. The apartment benefits from high ceilings, a double reception room, underfloor heating, air conditioning and original period features. There are also three large bedroom suites with marble bathrooms. Set behind a gated entrance, Rutland Court is in a quiet and secluded location offering two off street parking spaces (by separate negotiation), 24 hour security and a gym. Rutland Court is in Rutland Gardens, a private road in Knightsbridge secured with a manned barrier. Situated only moments away from the open spaces of one of the prestigious Royal Parks (Hyde Park) and the international amenities of Knightsbridge.

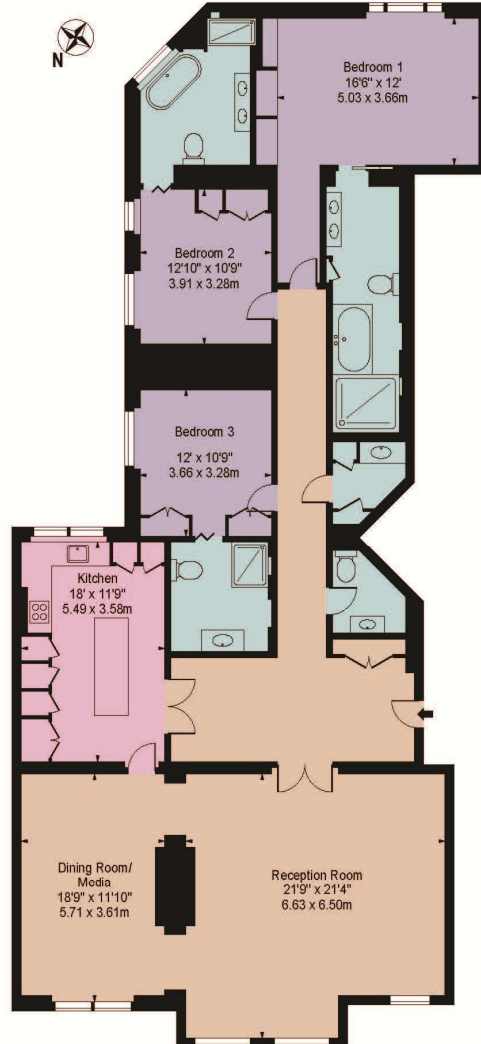
Price £8,250,000



5 Dorset Street London W1U 6QJ
Tel: 020 7580 2030 | Email: enquiries@rokstone.com
<http://www.rokstone.com>

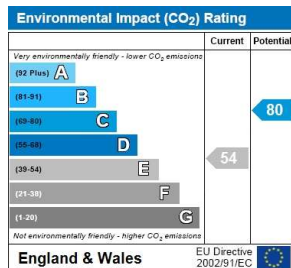
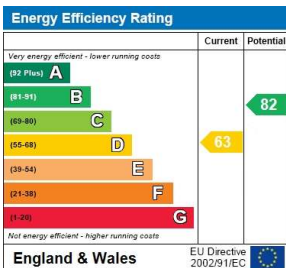
ROKSTONE

Rutland Gardens Approx. Gross Internal Area 2255 Sq Ft - 209.50 Sq M



Raised Ground Floor
For Illustration Purposes Only - Not To Scale

This floor plan should be used as a general outline for guidance only and does not constitute in whole or in part an offer or contract. Any intending purchaser or lessee should satisfy themselves by inspection, searches, enquiries and full survey as to the correctness of each statement. Any areas, measurements or distances quoted are approximate and should not be used to value a property or be the basis of any sale or let.



Terms

Local Authority: Westminster City Council

Tenure: Leasehold

Lease: -2018

Service Charge: £3,348.90PA

Ground Rent: £0PA

5 Dorset Street London W1U 6QJ

Tel: 020 7580 2030 | Email: enquiries@rokstone.com

<http://www.rokstone.com>