



Westdene, The Ley  
Box, SN13 8LA





## Westdene, The Ley Box, SN13 8LA

**Built in the 1930's We are delighted to have been given the opportunity to sell this individual 3 BEDROOM DETACHED BUNGALOW WITH THE MOST AMAZING VIEWS ACROSS BOX.**

- 3 Bed Detached Bungalow
- Stunning Views To The Front
- Quiet Location
- Scope For Improvements
- Requiring Some Updating
- Garage & Parking
- First Time Ever To The Market
- No Onward Chain

Guide Price £365,000





## Description

Built in the 1930's We are delighted to have been given the opportunity to sell this individual 3 BEDROOM BAYFRONTED DETACHED BUNGALOW WITH THE MOST AMAZING VIEWS ACROSS BOX. The property has never been sold since it was built, and is located in this quiet and peaceful location in the popular village locations of Box giving excellent access to both Corsham and Bath along the A4. The property does require some updating, while the living accommodation comprises of rear entrance porch, kitchen, 3 double bedrooms two of them having the most amazing views to the front and a bathroom. Further benefits include gas central heating, double glazing, gardens to the front and side, off road parking for 1 car and a single garage. In short to fully appreciate all this property has to offer we would advise an early internal inspection. The property is brought to the market with NO ONWARD CHAIN

## Situation

The village of Box offers an excellent range of facilities and includes a post office, general stores, newsagents, butchers, chemist, library, doctor's surgery, public houses, church and a primary school. Bath is readily accessible some four miles away whilst Corsham, Chippenham, Bristol and Swindon are all within easy reach. The M4 motorway is accessible to the North whilst mainline rail services providing hourly links to London (Paddington) operate from Bath and Chippenham

## Property Information

Council Tax Band: E

Freehold

Mains Services

EPC Rating: D

NO ONWARD CHAIN

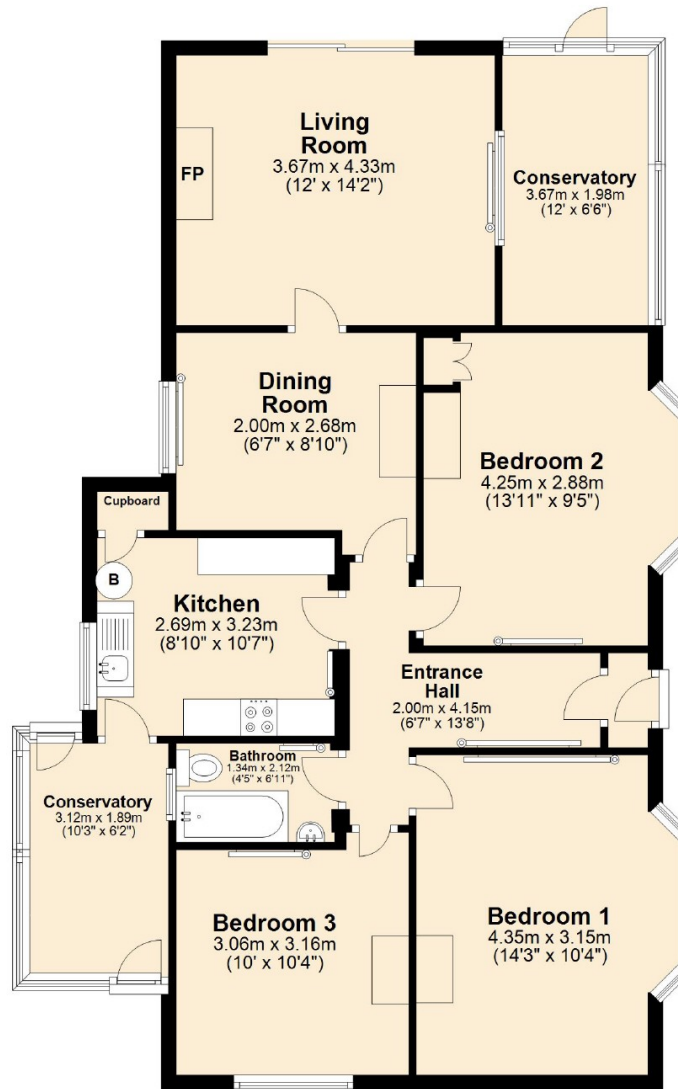


These particulars, whilst believed to be accurate are set out as a general outline only for guidance and do not constitute any part of an offer or contract. Intending purchasers should not rely on them as statements of representations of fact, but must satisfy themselves by inspection or otherwise as to their accuracy. No person in this firm's employment has the authority to make or give any representation or warranty in respect of the property. All measurements and distances are approximate only.



## Ground Floor

Approx. 98.6 sq. metres (1061.6 sq. feet)



Total area: approx. 98.6 sq. metres (1061.6 sq. feet)

6 High Street, Corsham, Wiltshire, SN13 0HB

Tel: 01249 712039

Fax:

Email: corsham@strakers.co.uk

[www.strakers.co.uk](http://www.strakers.co.uk)

■ Chippenham

■ Corsham

■ New Homes

■ Malmesbury

■ Swindon

■ Devizes

■ Auction

■ Lettings