

# FLETCHERS

ESTATE AGENTS



## Malthouse Drive, W4

£875 Per week (£3,795 pcm)

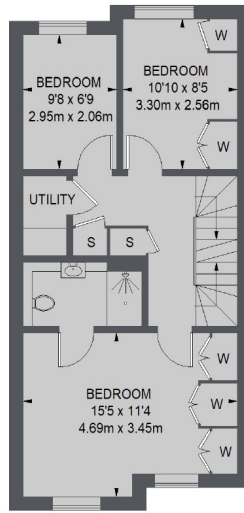
A five bedroom home in a private gated development with a modern kitchen, three bathrooms, garden, garage and off-street parking.

Malthouse Drive is a modern development by the River Thames off Pumping Station Road, within a mile of Chiswick Overground station, providing easy access to the A316 and A4.

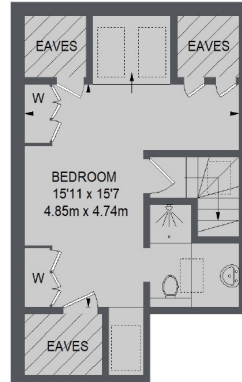
- Beautiful Townhouse • Five Bedrooms • Private & Gated Development • Modern Kitchen • Off-Street Parking • Garage •

# FLETCHERS

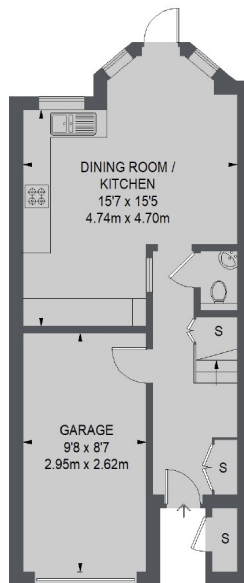
ESTATE AGENTS



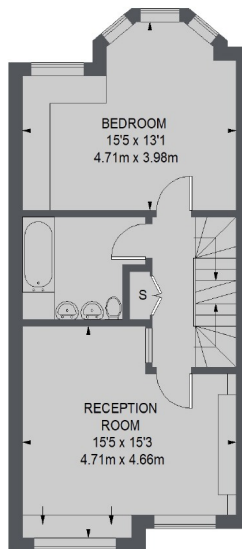
SECOND FLOOR



THIRD FLOOR



GROUND FLOOR



FIRST FLOOR

TOTAL APPROX. FLOOR AREA  
(EXCLUDING EAVES & INCLUDING GARAGE)  
1850 SQ. FT. (171.9 SQ. M.)

Fletchers Chiswick High Road Lettings  
86 Chiswick High Road, Chiswick,  
London, W4 1SY  
020 8742 4100  
[chiswicklettings@fletcherestates.com](mailto:chiswicklettings@fletcherestates.com)

Energy Rating: C. We aim to make our particulars both accurate and reliable. However they are not guaranteed; nor do they form part of an offer or contract. If you require clarification on any points then please contact us, especially if you're traveling some distance to view. Please note that appliances and heating systems have not been tested and therefore no warranties can be given as to their good working order.