

SNELLERS

ESTATE AGENTS



Princes Road, TW11

£3,250 PCM

A substantial semi-detached home ideal for the growing family with some great open plan space! There is a modern kitchen/dining room, two bathrooms, off street parking and private rear garden.

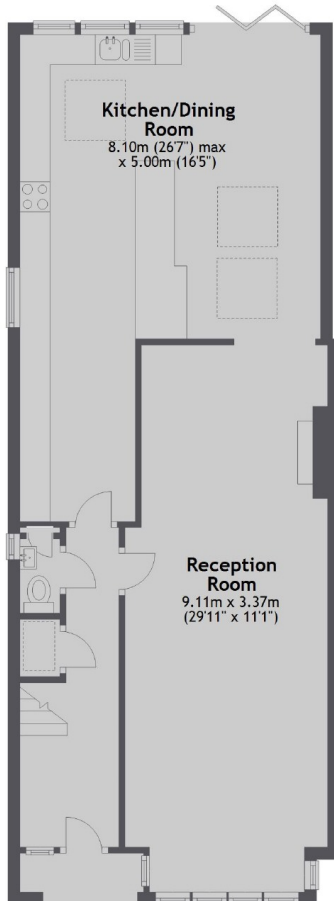
Princes Road is moments from Hampton Hill's shops and restaurants and with easy access to Bushy Park and Fulwell Train station.

- Semi Detached House • Four Bedrooms • Study •
- Open-Plan Living Area • Off Street Parking • Private Garden •

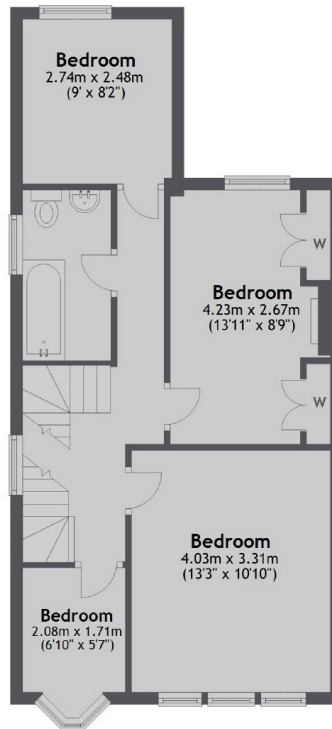
SNELLERS

ESTATE AGENTS

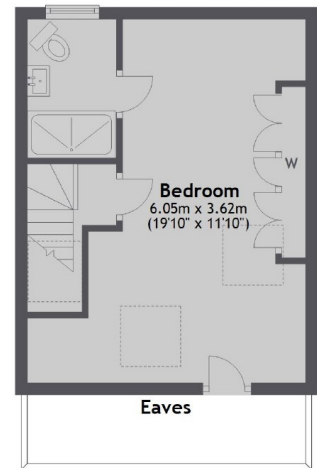
Ground Floor



First Floor



Second Floor



Total area: approx. 150.0 sq. metres (1614.8 sq. feet)

Snellers Teddington Lettings
74 Broad Street
Teddington
TW11 8QX
020 8614 6140
teddingtonlettings@snellers.co.uk

Energy Rating: D We aim to make our particulars both accurate and reliable. However they are not guaranteed; nor do they form part of an offer or contract. If you require clarification on any points then please contact us, especially if you're traveling some distance to view. Please note that appliances and heating systems have not been tested and therefore no warranties can be given as to their good working order