

Chard

— Lettings —



Holmead Road, SW6

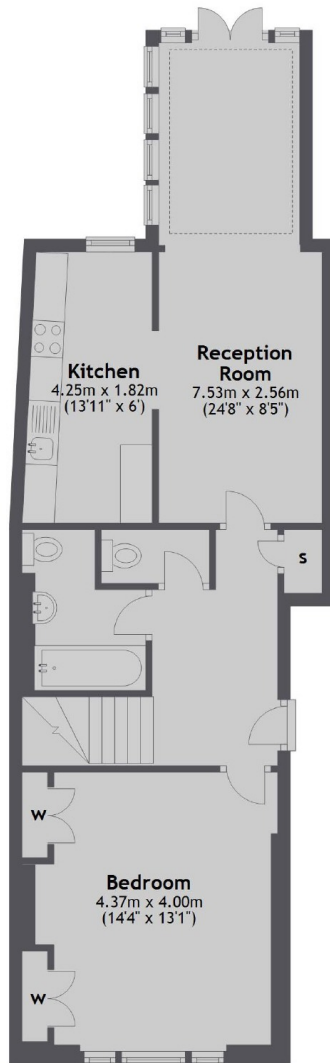
£635 pw (£2,752 pcm)

This two bedroom split-level garden flat is in the heart of Fulham ideally located for local amenities and transport links. Spread over two floors, the property has a spacious reception room, a separate eat-in kitchen, conservatory with access to a private garden, a separate WC and great storage space.

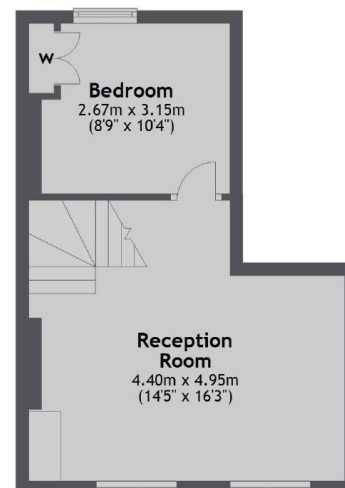
Holmead Road is off Fulham Road and Kings Road in the Moore Park Estate. There are good bus links leading into Chelsea and the city. The nearest underground station is Fulham Broadway with many amenities also nearby.

Two Bedrooms Separate Reception Eat-In Kitchen
Conservatory Private Garden Family Bathroom

Ground Floor



First Floor



Total area: approx. 88.9 sq. metres (956.8 sq. feet)

Chard Fulham Lettings
5 Harwood Road,
London, SW6 4QP
020 7384 1400
fulhamlettings@chard.co.uk

Energy Rating: C. We aim to make our particulars both accurate and reliable. However they are not guaranteed; nor do they form part of an offer or contract. If you require clarification on any points then please contact us, especially if you're traveling some distance to view. Please note that appliances and heating systems have not been tested and therefore no warranties can be given as to their good working order.