



Littleton Street, SW18

£1,100,000

A five bedroom mid terrace Victorian house, that has been extended into the loft creating a great family home.

- Five Bedrooms
- Two Bathrooms
- Chain Free
- Victorian Family Home
- Scope to Extend Further
- Central Earlsfield

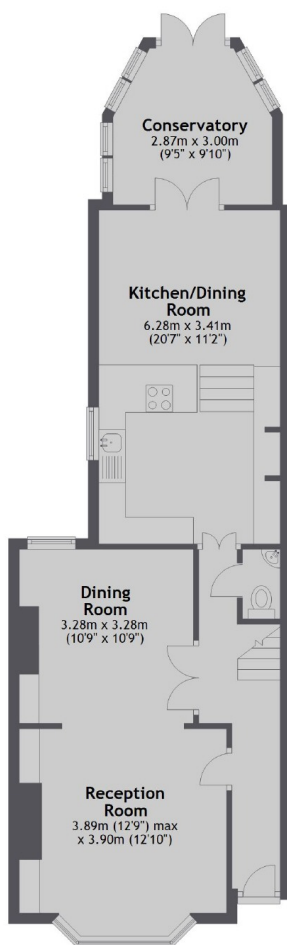
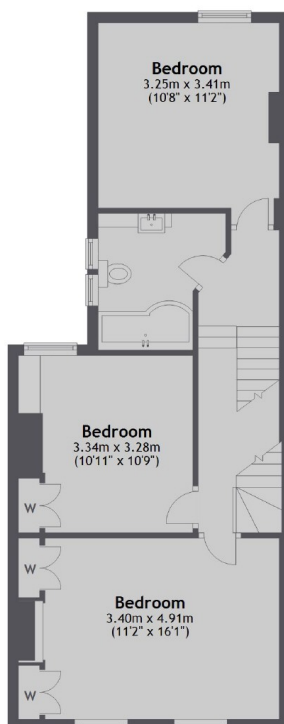
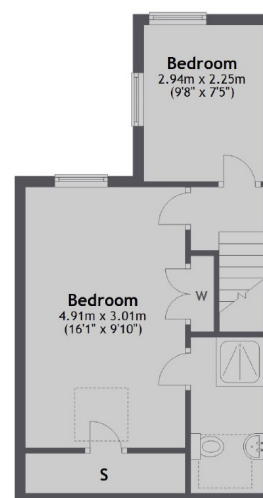


The property also benefits from the scope to extend further into the side return and rear. Accommodation comprises; entrance hall with useful guest cloakroom and storage cupboards, spacious and well presented main double reception room, well presented kitchen which is open plan to the dining area and has access to the conservatory which offers an excellent entertaining space; double doors lead out to a large lawned mature garden. On the first floor there is a modern family bathroom and three well proportioned bedrooms and stairs leading to the second floor with a further two bedrooms; one double bedroom with en suite bathroom.

Located on a much sought after road in Earlsfield, Littleton Street is close to Earlsfield mainline station. Garratt Lane with its vast array of shops, bars and restaurants is within easy reach and provides access to both Tooting Broadway and Wandsworth Town which offer plenty of independent shops. The green open spaces of Wandsworth Common and Garratt Green are also close by.





Ground Floor

First Floor

Second Floor


Total area: approx. 150.8 sq. metres (1623.7 sq. feet)

Jacksons Earlsfield
372-374 Garratt Lane
Earlsfield
London
SW18 4ES
020 8971 7979

Energy Rating: E We aim to make our particulars both accurate and reliable. However they are not guaranteed; nor do they form part of an offer or contract. If you require clarification on any points then please contact us, especially if you're traveling some distance to view. Please note that appliances and heating systems have not been tested and therefore no warranties can be given as to their good working order.