

# Chard

— Lettings —



## Spear Mews, SW5

£1,384 pw (£5,997 pcm)

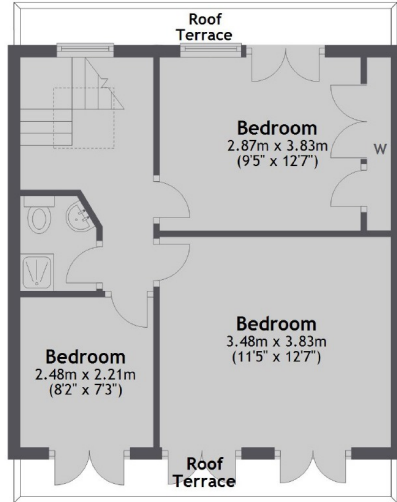
This five bedroom family home is ideally located in a cobbled mews moments away from Earls Court station. The property has fantastic entertainment space with a semi open-plan reception, a modern integrated kitchen with good storage, a private terrace and three bathrooms.

Spear Mews is ideally located close to Earls Court tube station and many restaurants, bars and cafes. There is also easy access to Knightsbridge, South Kensington and High Street Kensington for all you luxury shopping needs.

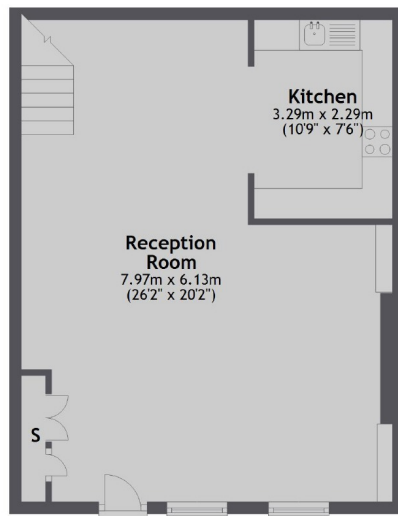
Five Bedrooms    Three Bathrooms    Semi Open-Plan  
Modern Kitchen    Private Terrace    Mews House

# Chard

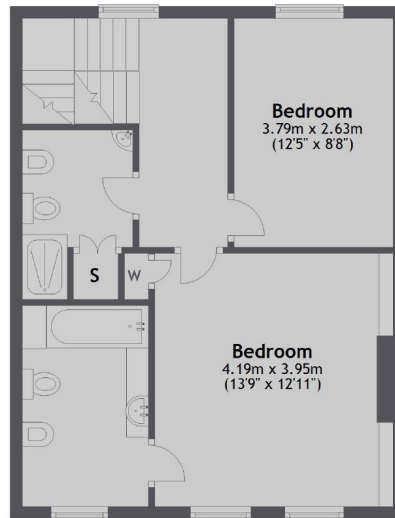
Lettings



Second Floor



Ground Floor



First Floor

Total area: approx. 138.0 sq. metres (1485.0 sq. feet)

Chard Fulham  
5 Harwood Road,  
London, SW6 4QP  
020 7384 1400  
fulhamlettings@chard.co.uk

Energy Rating: D. We aim to make our particulars both accurate and reliable. However they are not guaranteed; nor do they form part of an offer or contract. If you require clarification on any points then please contact us, especially if you're traveling some distance to view. Please note that appliances and heating systems have not been tested and therefore no warranties can be given as to their good working order.