



Cowper Road, W7

£775,000

An imposing three bedroom end of terrace family home spaciouly arranged over three floors offered onto the market with no onward chain.



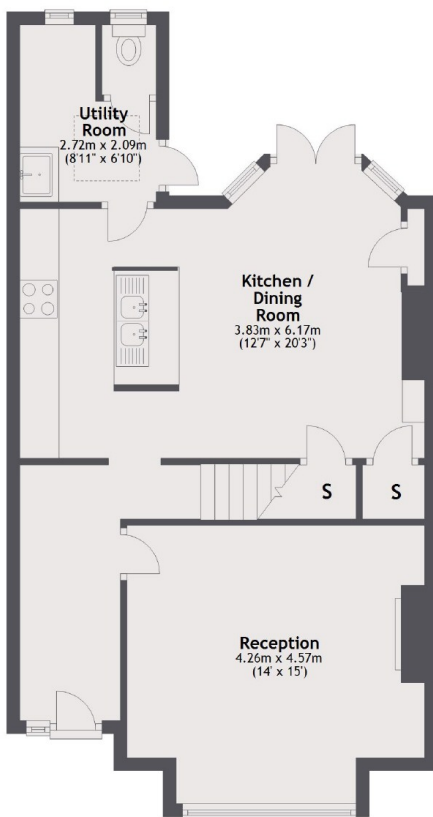
Nestled away in the ever popular and rarely available Poet's Corner, this commanding Edwardian family home offers a beautiful balance of living space and well proportioned bedrooms. On the ground floor is a reception room which boasts marvellous high ceilings facilitating the natural light to flow throughout and an abundance of period features. Additionally a generous kitchen/diner with useful utility room just off it ensures space for cooking and entertaining. Secluded south-facing garden to enjoy the sunlight and aspect and convenient side access. Over the first and second floors there are three double bedrooms (master which has en-suite shower-room) and useful walk in wardrobe, separate family bathroom on the first floor also. This home is presented in very good condition and offering over 1600 sq ft is ready for a new family to move in.

Ideally located for Hanwell Station (Crossrail) and many varied and frequent bus routes on Greenford Avenue. Brent Valley golf course and the 'Bunny Park' offer brilliant recreational amenities. Many well regarded schools catchments to choose from including Drayton Manor, Hobbayne and St Joseph's to name a few.

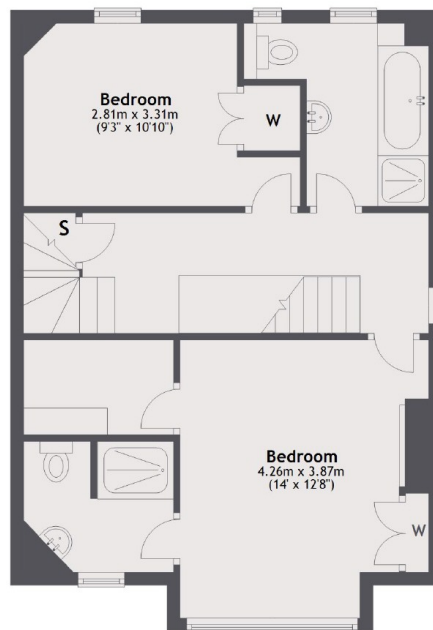
- End Of Terrace • No Onward Chain • Over 1600 Sq Ft •
- South-Facing Garden • Excellent Transport Links • Well Regarded Schools •



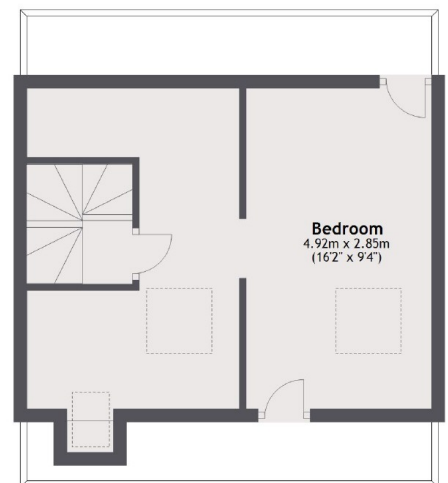
Ground Floor



First Floor



Second Floor



Total area: approx. 151.3 sq. metres (1628.1 sq. feet)

Robertson Smith & Kempson Hanwell Sales
69 Greenford Avenue,
London, W7 1LL
020 8566 2339
hanwellsales@robertsonsmithandkempson.co.uk

Energy Rating: C. We aim to make our particulars both accurate and reliable. However they are not guaranteed; nor do they form part of an offer or contract. If you require clarification on any points then please contact us, especially if you're traveling some distance to view. Please note that appliances and heating systems have not been tested and therefore no warranties can be given as to their good working order.