



Laurel Gardens, W7

£375,000

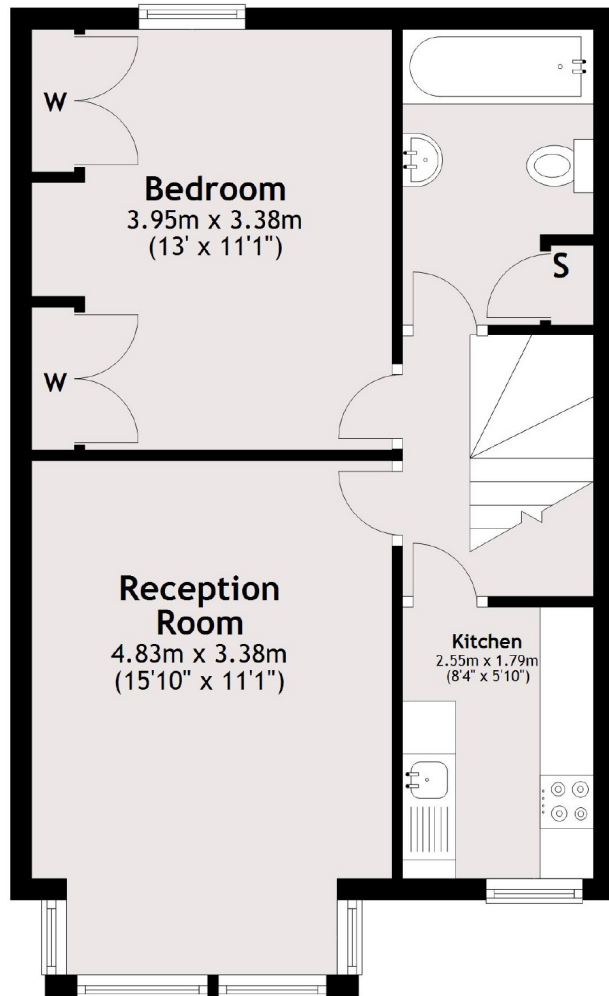
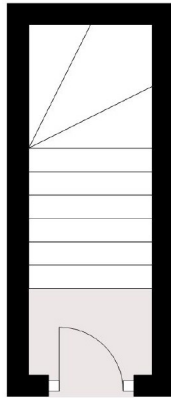
A beautiful one double bedroom first floor flat with no onward chain and share of freehold.

Excellent location for Hanwell Station (Crossrail), many bus links on Uxbridge Road (varied and frequent) and short walk to the renowned 'Bunny Park'.

- Share Of Freehold • One Double Bedroom • No Chain •

First Floor

Ground Floor



Total area: approx. 48.1 sq. metres (518.2 sq. feet)

Robertson Smith & Kempson Hanwell Sales
69 Greenford Avenue,
London, W7 1LL
020 8566 2339
hanwellsales@robertsonsmithandkempson.co.uk

Energy Rating: C. We aim to make our particulars both accurate and reliable. However they are not guaranteed; nor do they form part of an offer or contract. If you require clarification on any points then please contact us, especially if you're traveling some distance to view. Please note that appliances and heating systems have not been tested and therefore no warranties can be given as to their good working order.