



Ullathorne Road, SW16

£1,200 PCM

A well presented one double bedroom purpose built flat. The property comprises double bedroom, reception room, modern fitted kitchen with integrated appliances, modern bathroom suite and also

- Purpose Built Flat
- One Double Bedroom
- Modern Fitted Kitchen
- Reception Room
- Modern Bathroom
- Communal Garden

For further information on the costs associated with renting a property, please pop into our office or visit our website.

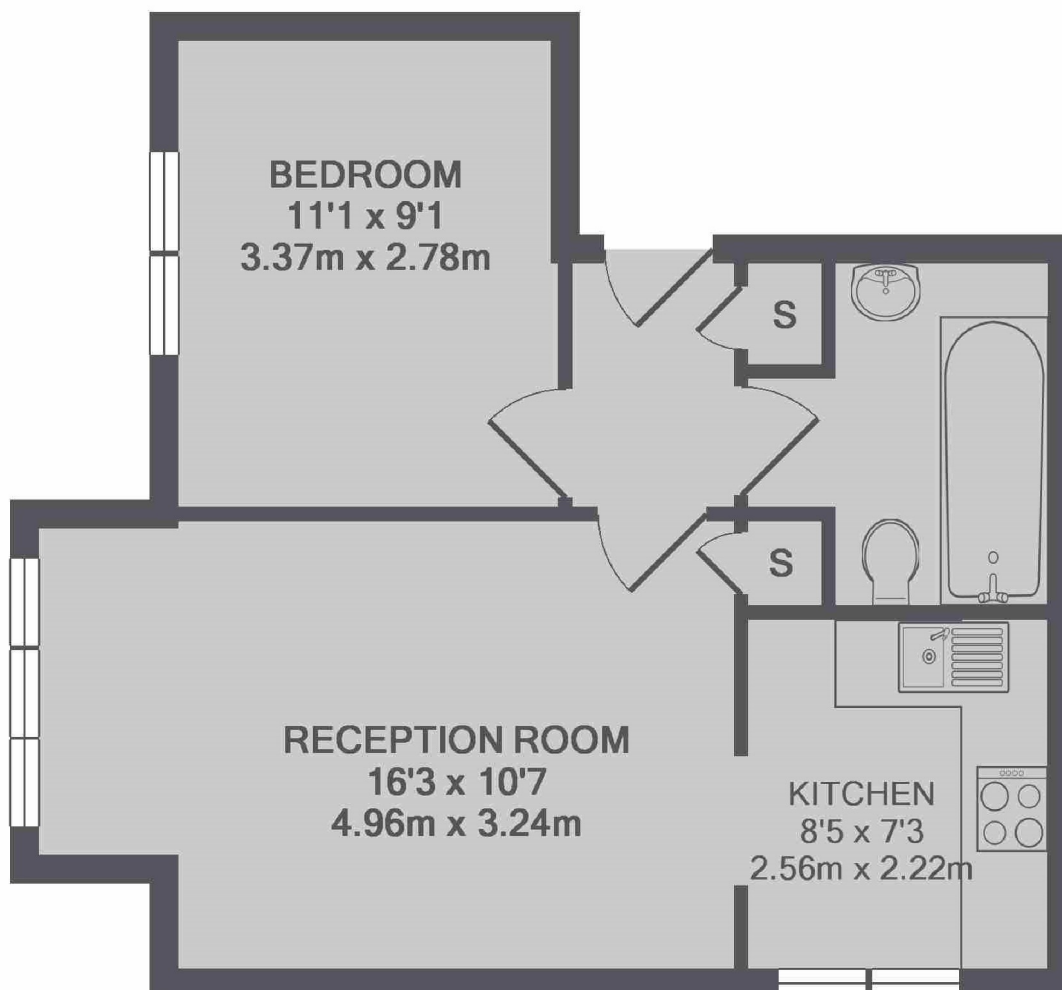


A well presented one double bedroom purpose built flat. The property comprises double bedroom, reception room, modern fitted kitchen with integrated appliances, modern bathroom suite and also benefits from a large communal gardens.

Ullathorne Road is located within minutes of Tooting Common and is served by Tooting Bec, Tooting Broadway and Tooting Rail stations.







TOTAL APPROX. FLOOR AREA 410 SQ.FT. (38.1 SQ.M.)

Jacksons Tooting
26 Tooting Bec Road
London
SW17 8BD
020 8767 0522
tooting.lettings@jacksonsestateagents.com

Energy Rating: C We aim to make our particulars both accurate and reliable. However they are not guaranteed; nor do they form part of an offer or contract. If you require clarification on any points then please contact us, especially if you're traveling some distance to view. Please note that appliances and heating systems have not been tested and therefore no warranties can be given as to their good working order.