



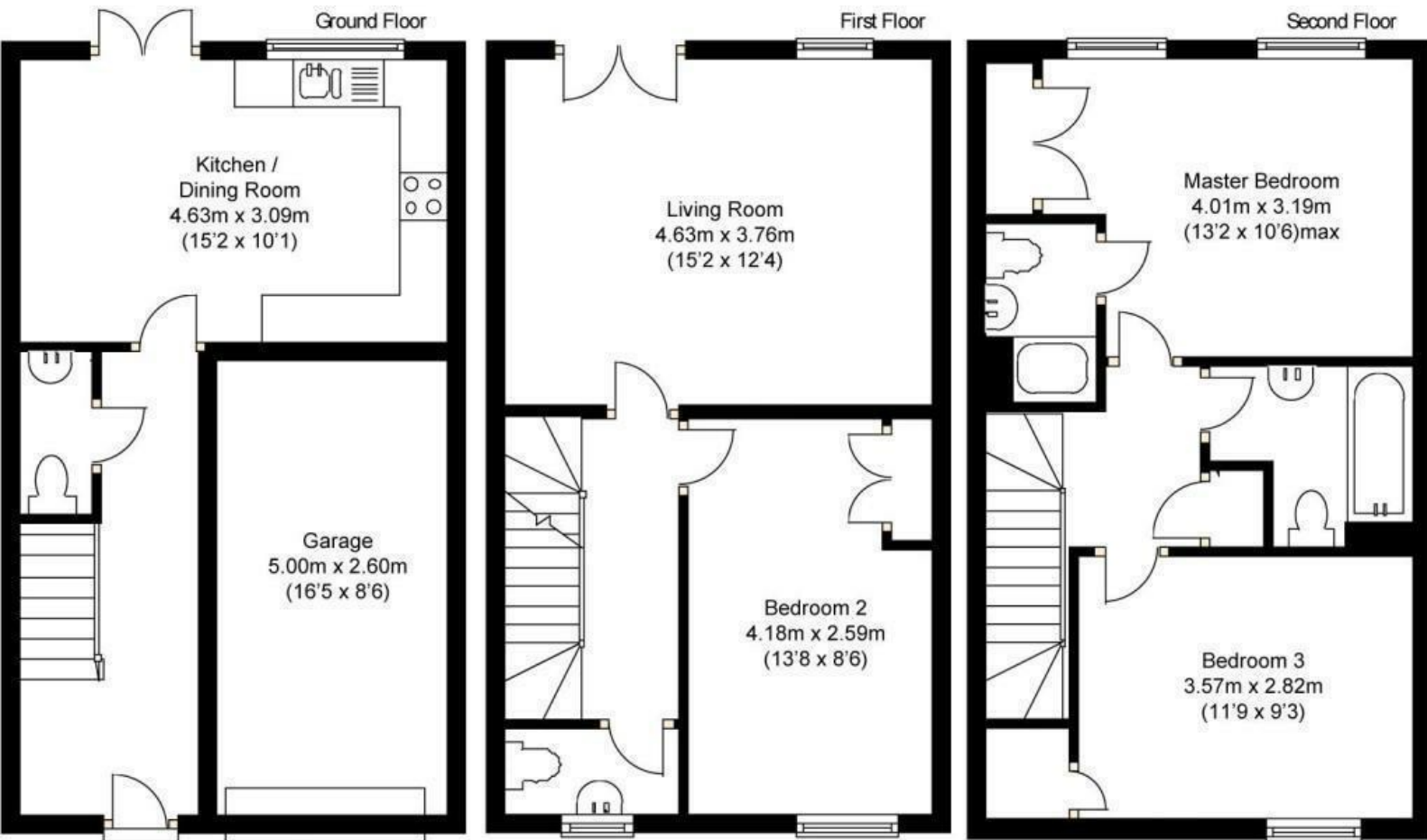
**Lucas Close**  
**Crawley, RH10 7EY**  
**£1,375**

\* Three bedroom town house \* Carpets being replaced \* En-suite to master bedroom \* Toilet on every floor \*  
Walking distance to Three Bridges train station \* Parking \* Kitchen with appliances \*

## Lucas Close, Crawley, RH10 7EY

Members of the property ombudsman  
Members of CMP for client money protection  
security deposit equivalent 5 weeks rent  
reservation deposit equivalent of one weeks rent





Approximate Gross Internal Area 109.4 sq.m (1177.7 sq.ft)

Energy Efficiency Rating		Current	Potential
Very energy efficient - lower running costs			
(92 plus) A			
(81-91) B			
(69-80) C			
(55-68) D			
(39-54) E			
(21-38) F			
(1-20) G			
Not energy efficient - higher running costs			
<b>England &amp; Wales</b>		74	76
EU Directive 2002/91/EC			

Environmental Impact (CO <sub>2</sub> ) Rating		Current	Potential
Very environmentally friendly - lower CO <sub>2</sub> emissions			
(92 plus) A			
(81-91) B			
(69-80) C			
(55-68) D			
(39-54) E			
(21-38) F			
(1-20) G			
Not environmentally friendly - higher CO <sub>2</sub> emissions			
<b>England &amp; Wales</b>		84	87
EU Directive 2002/91/EC			