

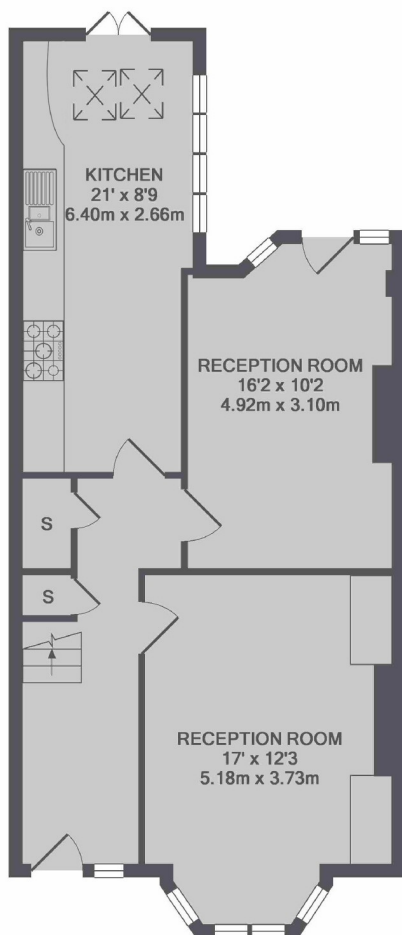


Foulser Road, SW17

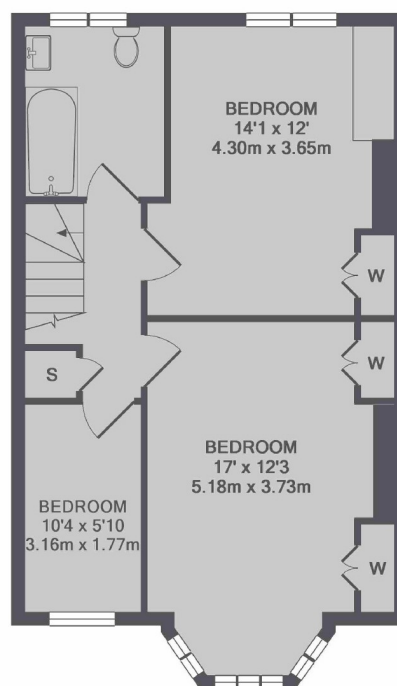
£2,900 PCM

This stunning four bedroom period house is bright and spacious throughout and is ideal for a family or professional sharers.

- Period House
- Kitchen Breakfast Room
- Large Reception Room
- Four Bedrooms
- Private Rear Garden
- Close to Station



GROUND FLOOR



1ST FLOOR

TOTAL APPROX. FLOOR AREA 1188 SQ.FT. (110.4 SQ.M.)

Jacksons Tooting
26 Tooting Bec Road
London
SW17 8BD
020 8767 0522
tooting.lettings@jacksonsestateagents.com

Energy Rating: We aim to make our particulars both accurate and reliable. However they are not guaranteed; nor do they form part of an offer or contract. If you require clarification on any points then please contact us, especially if you're traveling some distance to view. Please note that appliances and heating systems have not been tested and therefore no warranties can be given as to their good working order.