

TATES

Residential Sales & Lettings

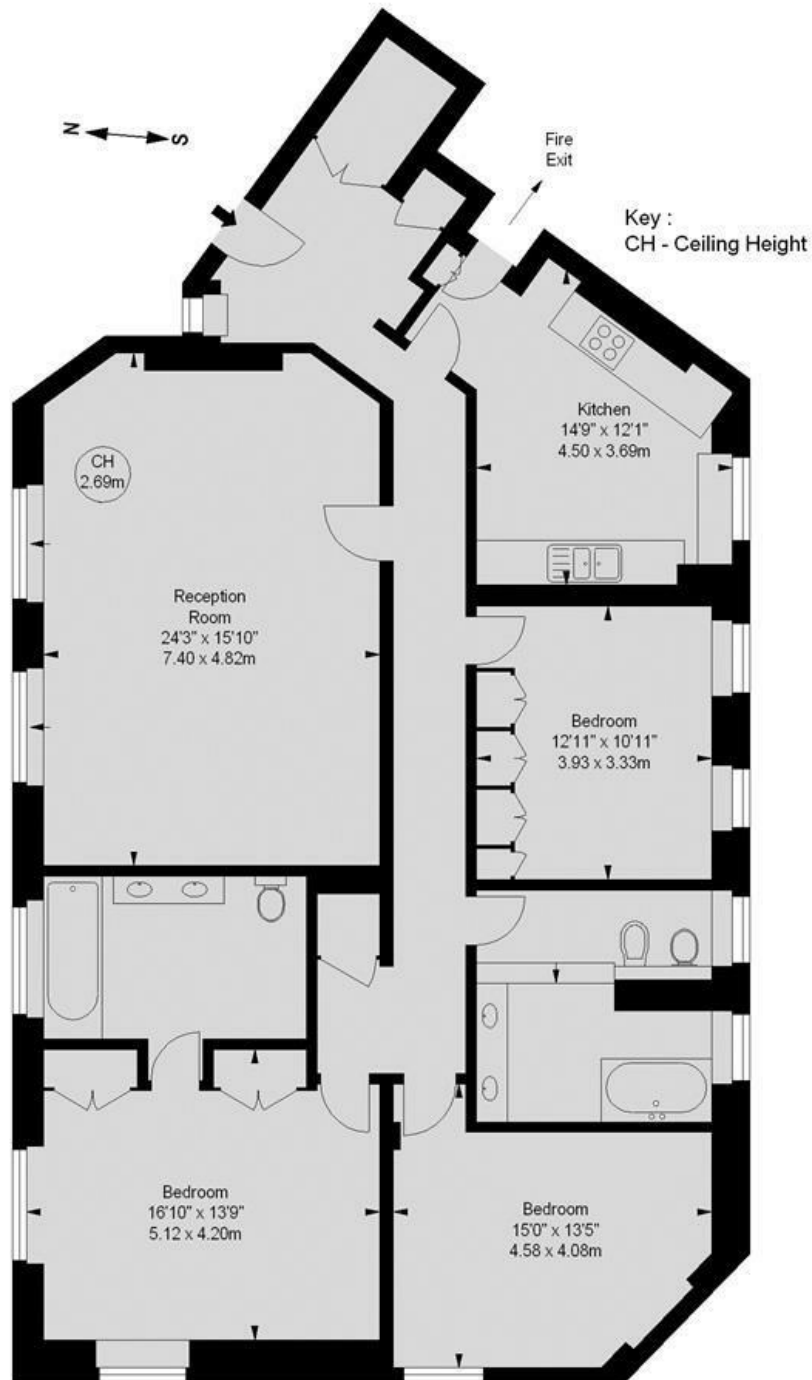


Fitzjames Avenue, Kensington, London W14

£1,600,000

- Spacious entrance hall
- Master bedroom with ensuite bathroom
- Kitchen / breakfast room
- Gated development with off-street parking (by arrangement)
- 24hr security/porterage
- Dual aspect double reception room
- 2 further double bedrooms and family bathroom
- Excellent storage throughout
- Landscaped Communal gardens
- Share of Freehold

Approximate gross internal area
1,658 sq ft / 154.0 sq m



Second Floor

Illustration For Identification Purposes Only. Not To Scale
*Floorplan Drawn According To RICS Guidelines

Whilst these particulars are believed to be correct, no guarantee can be given for the measurements, appliances or services. It is our recommendation that all are tested. These are not intended to form part of any contract. Tate's accept no responsibility for their accuracy.

Energy Efficiency Rating		
	Current	Potential
Very energy efficient - lower running costs		
(92 plus) A		
(81-91) B		
(69-80) C		
(55-68) D	66	68
(39-54) E		
(21-38) F		
(1-20) G		
Not energy efficient - higher running costs		
England & Wales		
EU Directive 2002/91/EC		

135 Hammersmith Rd London W14 0QL

T. 020 7602 6020 F. 020 7602 9522

mail@tatesestates.co.uk

tatesestates.co.uk

Tates (Agents) Ltd. Registered in England and Wales No. 2356337

Registered Office: 4th Floor Imperial House, 15 Kingsway London WC2B 6U

