



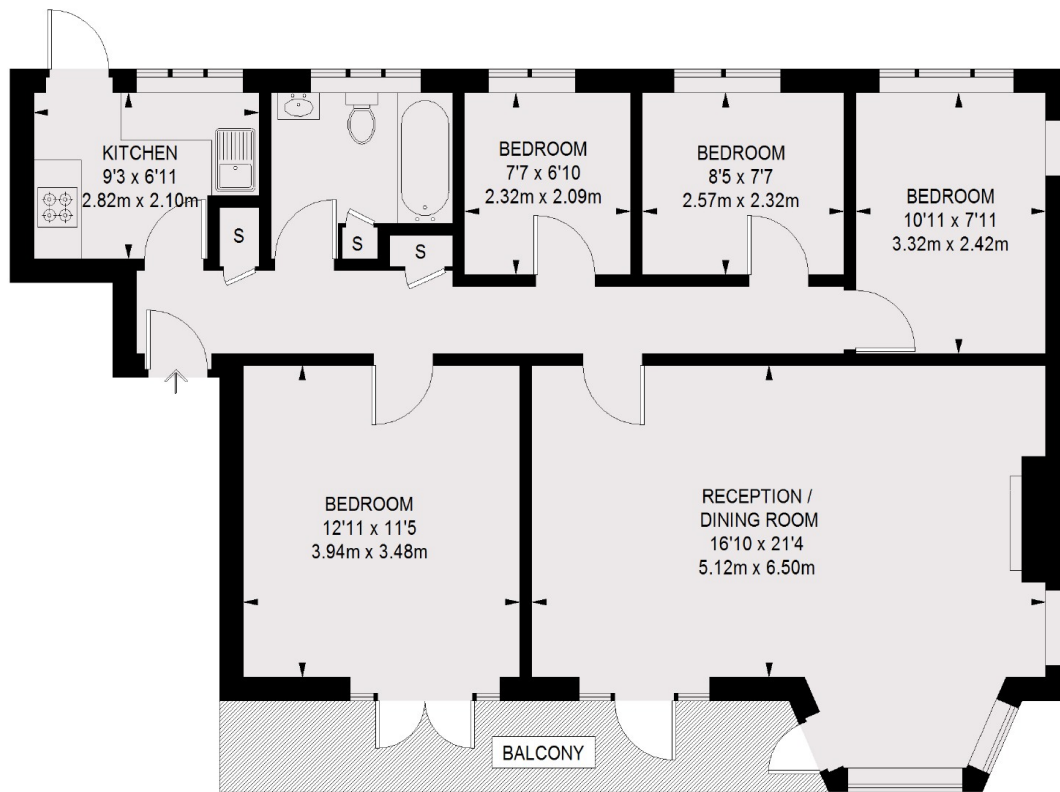
Ealing Village, W5

£650,000

A four bedroom flat in a popular Grade II listed development. Over 920 sq.ft of internal space with a light and spacious reception room, which leads out onto a south-facing balcony overlooking the communal grounds.

Less than half a mile to Ealing Broadway station (Crossrail, Central and District lines). Half a mile from North Ealing Station (Piccadilly line).

- South-Facing Balcony • Four Bedrooms • Gated With Parking •
- Spacious Living Room • Residents Amenities • Separate Kitchen •



FIRST FLOOR

TOTAL APPROX. FLOOR AREA = 924 SQ FT. (85.85 SQ M)
BALCONY = 92 SQ FT. (8.57 SQ M)

Robertson Smith & Kempson Ealing Sales
1 The Broadway, London,
W5 2NT
020 8840 7677
ealingsales@robertsonsmithandkempson.co.uk

Energy Rating: D. We aim to make our particulars both accurate and reliable. However they are not guaranteed; nor do they form part of an offer or contract. If you require clarification on any points then please contact us, especially if you're traveling some distance to view. Please note that appliances and heating systems have not been tested and therefore no warranties can be given as to their good working order.