



Hartington Road, W13

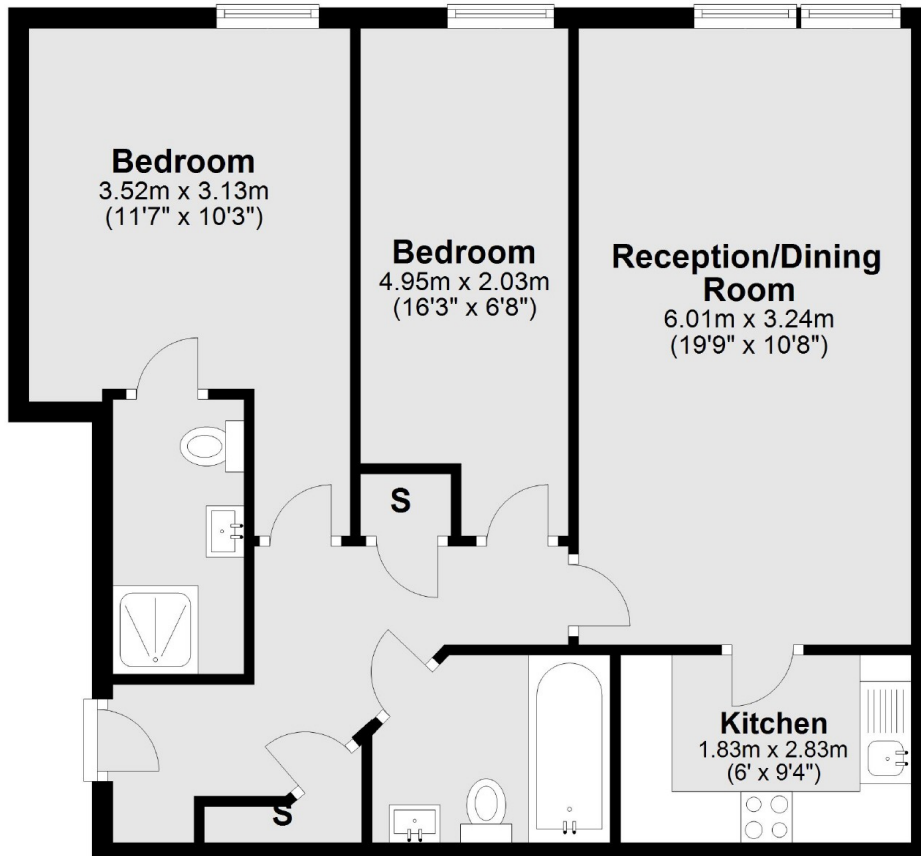
£425,000

A two bedroom, two bathroom purpose-built flat close to the various amenities of the Uxbridge Road. The flat also comes with an allocated underground parking space and large communal roof terrace.

Less than a quarter of a mile to West Ealing station (upcoming Crossrail) and under a mile to Ealing Broadway (Crossrail, Central and District lines).

- Allocated Secure Parking • No Onward Chain • Communal Roof Terrace •
- Lift Access • Two Bathrooms • Long Lease •

Second Floor



Total area: approx. 64.8 sq. metres (697.2 sq. feet)

Robertson Smith & Kempson Ealing Sales
1 The Broadway, London,
W5 2NT
020 8840 7677
ealingsales@robertsonsmithandkempson.co.uk

Energy Rating: C. We aim to make our particulars both accurate and reliable. However they are not guaranteed; nor do they form part of an offer or contract. If you require clarification on any points then please contact us, especially if you're traveling some distance to view. Please note that appliances and heating systems have not been tested and therefore no warranties can be given as to their good working order.