

# SNELLERS

ESTATE AGENTS



## River Reach, TW11

£789,950

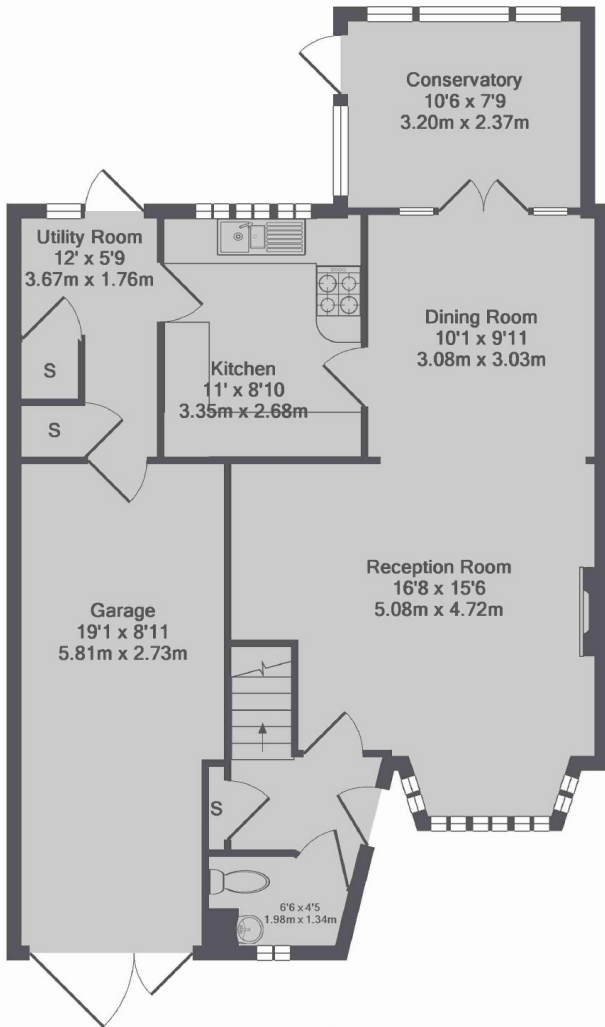
A delightful four bedroom family house situated in a delightful cul-de-sac location close to the River Thames. This house offers 1,500 sq ft of living space, a garage, off-street parking and no chain. There are front and rear gardens and also a large first floor terrace.

The house is situated in a cul-de-sac just a mile from both Hampton Wick and Teddington stations, with Kingston town centre a short distance further. The area is well served by highly regarded local schools.

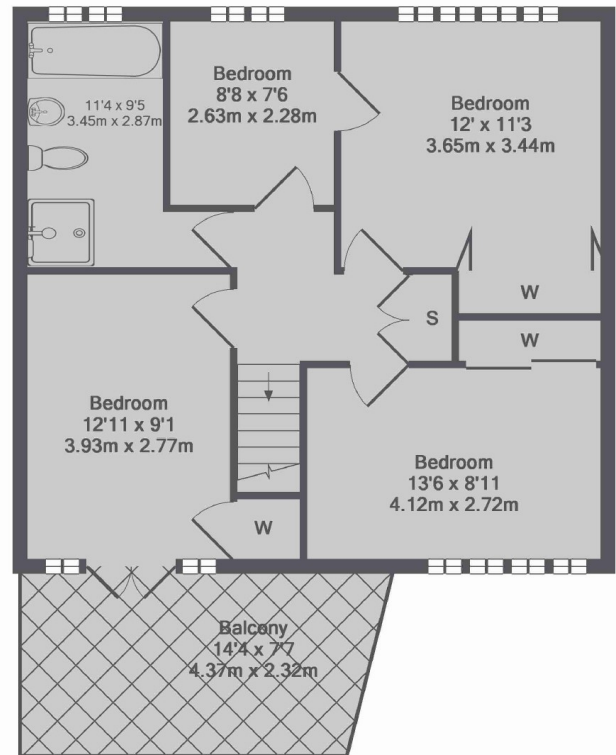
- Large Reception • Fitted Kitchen • Utility Room & Conservatory •
- Four Bedrooms • Family Bathroom • Rear garden •

# SNELLERS

ESTATE AGENTS



Ground Floor



1st Floor

River Reach, TW11  
Total Approx. Floor Area 1501 Sq.Ft. (139.4 Sq.M.)

Snellers Teddington Sales  
74 Broad Street  
Teddington  
TW11 8QX  
020 8408 8040  
teddingtonsales@snellers.co.uk

Energy Rating: D We aim to make our particulars both accurate and reliable. However they are not guaranteed; nor do they form part of an offer or contract. If you require clarification on any points then please contact us, especially if you're traveling some distance to view. Please note that appliances and heating systems have not been tested and therefore no warranties can be given as to their good working order