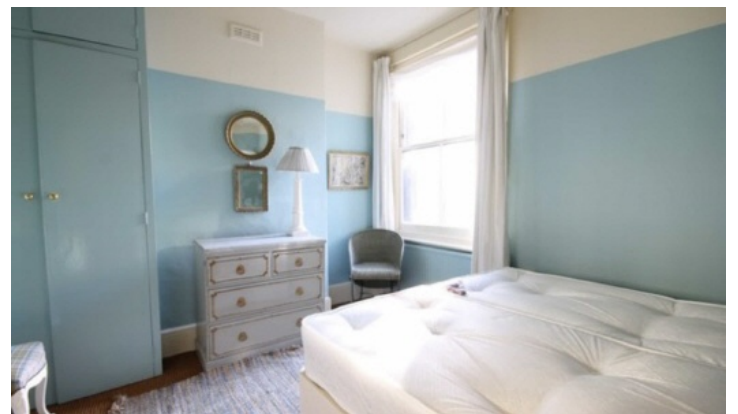
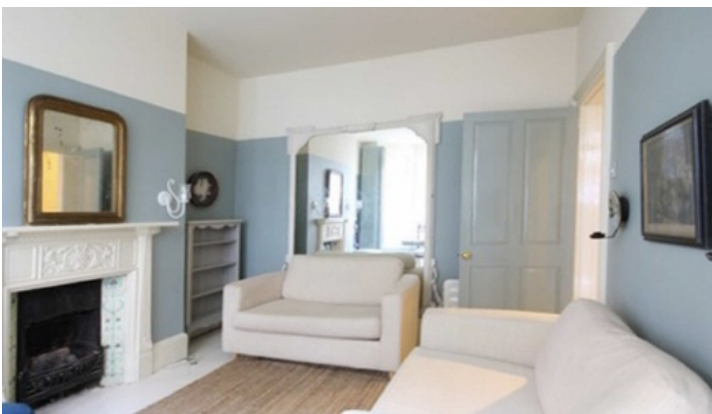


# Chard

— Lettings —



**Halford Road, SW6**

**£323 pw (£1,400 pcm)**

This spacious raised ground floor one double bedroom flat is ideally located in the heart of Fulham close to local amenities and transport links. The property has its own private entrance, a spacious reception, a separate kitchen and tiled bathroom with freestanding bath.

Halford Road is located near to Fulham Broadway and West Brompton Underground stations. There are many bus routes on North End Road and Lillie Road and many local amenities and eateries on your doorstep.

- One Bedroom • Spacious Reception • Private Entrance •

# Chard

— Lettings —

Chard Fulham  
5 Harwood Road,  
London, SW6 4QP  
020 7384 1400  
[fulhamlettings@chard.co.uk](mailto:fulhamlettings@chard.co.uk)

Energy Rating: D. We aim to make our particulars both accurate and reliable. However they are not guaranteed; nor do they form part of an offer or contract. If you require clarification on any points then please contact us, especially if you're traveling some distance to view. Please note that appliances and heating systems have not been tested and therefore no warranties can be given as to their good working order.

