

Chard

Lettings



Burnthwaite Road, SW6

£1,038 pw (£4,500 pcm)

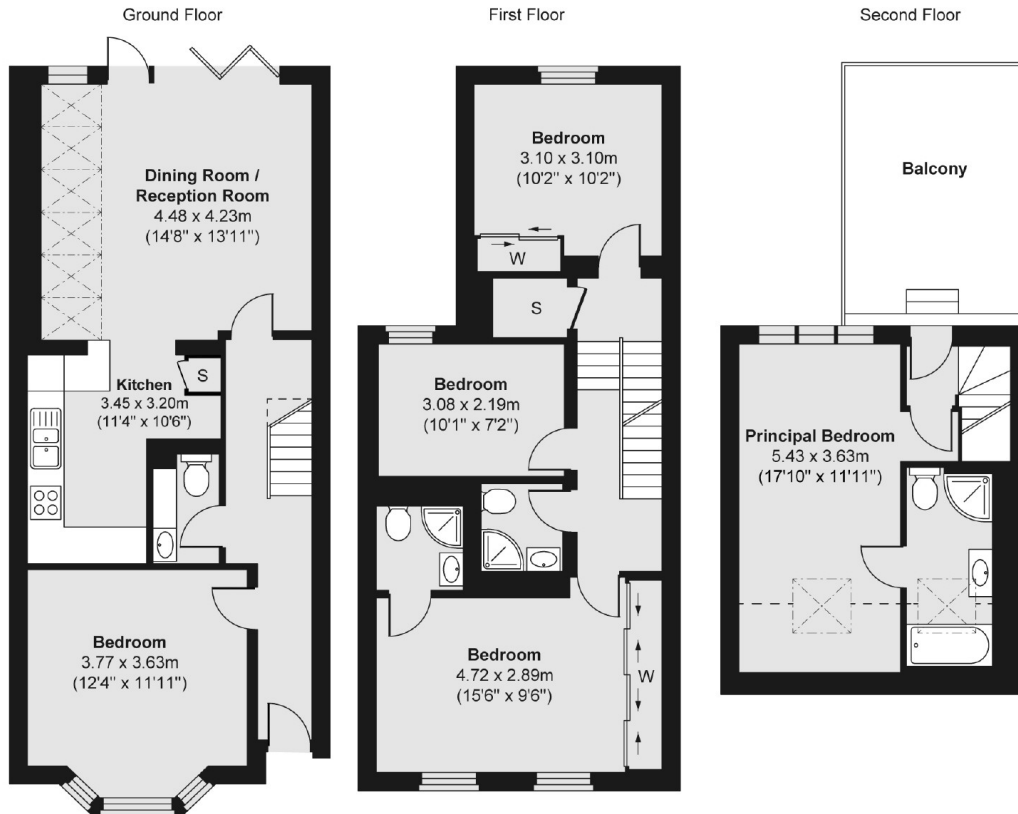
This five bedroom house has fantastic entertainment space with a semi open plan reception and modern integrated kitchen, good storage space, a rear garden and private terrace. The property is well located in Fulham Broadway close to many transport links.

Burnthwaite Road is off Dawes Road where there are many bus routes leading into the city. Fulham Broadway is the closest underground station, with many cafés, restaurants, bars and local amenities a short walk from the property.

- Five Bedrooms • Three Bathrooms • Semi Open Plan •

Chard

Lettings



Total area (approx.) 121.85 sq m / 1,312 sq ft

Balcony area (approx.) 12.86 sq. m (138 sq. ft)

Chard Fulham
5 Harwood Road,
London, SW6 4QP
020 7384 1400
fulhamlettings@chard.co.uk

Energy Rating: . We aim to make our particulars both accurate and reliable. However they are not guaranteed; nor do they form part of an offer or contract. If you require clarification on any points then please contact us, especially if you're traveling some distance to view. Please note that appliances and heating systems have not been tested and therefore no warranties can be given as to their good working order.