

GREYS

ESTATE AGENTS



12 and 14 Sandringham Road | Lower Parkstone | Poole | BH14 8TH

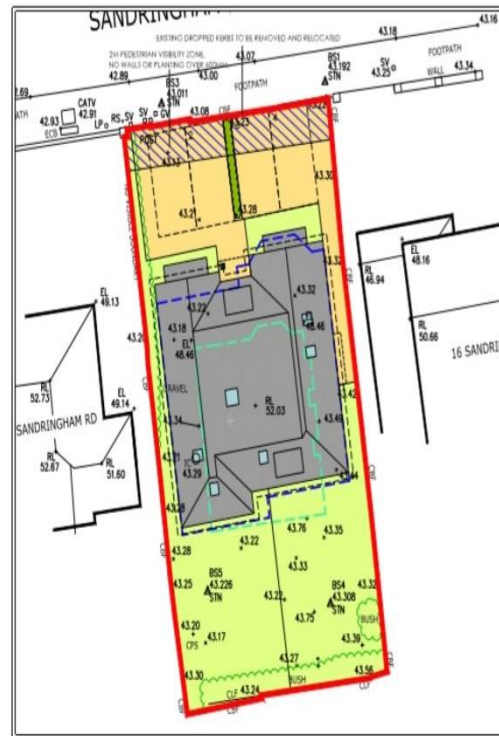
- Four Bedrooms
- Luxury Town Houses
- Two En-Suites & Additional Bathroom
- High Specification Throughout
- Rear Aspect Kitchen / Dining Area
- Separate Lounge
- Downstairs Cloakroom
- Southerly Rear Gardens
- Driveway with Off Road Parking
- Sought After Location

Asking Price
£650,000

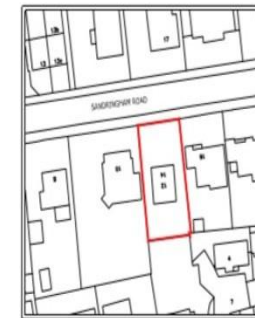


SUMMARY

NEW BUILD LUXURY TOWN HOUSES SITUATED IN A SOUGHT AFTER POSITION IN LOWER PARKSTONE, POOLE. >>> OFF PLAN AMENDMENTS AND RESERVATIONS AVAILABLE. As part of our Elite Homes range, Greys Estate Agents are delighted to offer for sale these beautifully designed three storey semi detached high specification Town Houses. The properties benefit from four bedrooms, two en-suite bathrooms / shower rooms, rear aspect open plan kitchen / dining rooms, lounge, downstairs cloakroom and family bathrooms. Other benefits include UPVC double glazing, gas central heating, Southerly landscaped rear gardens, front gardens and driveways with off road parking. With the position close to Ashley Cross, we strongly encourage early enquiries.



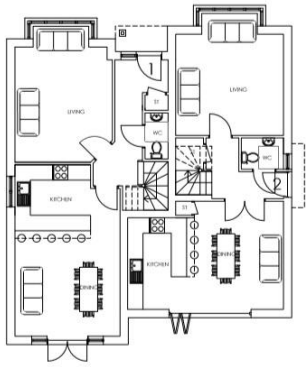
SITE PLAN
SCALE 1:100
BASED ON TOPO INFORMATION



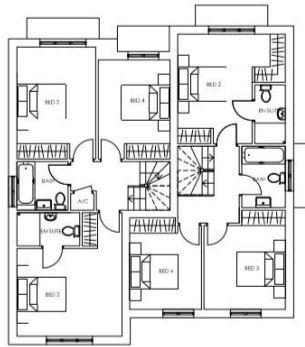
BLOCK PLAN
SCALE 1:100
BASED ON O.S. INFORMATION



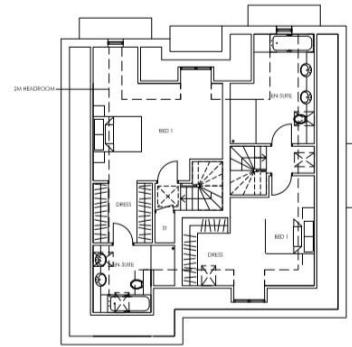
LOCATION PLAN
SCALE 1:1250
BASED ON O.S. INFORMATION



GROUND FLOOR PLAN
SCALE 1:100



FIRST FLOOR PLAN
SCALE 1:100



UPPER FLOOR PLAN
SCALE 1:100

Tenure

Freehold

Council Tax Band

Viewing Arrangements

Strictly by appointment

Contact Details

444 Ashley Road, Parkstone, Poole, Dorset, BH14 0AA

www.greystateagents.co.uk

parkstone@greystateagents.co.uk

01202 749390

Agents Note: Whilst every care has been taken to prepare these sales particulars, they are for guidance purposes only. All measurements are approximate are for general guidance purposes only and whilst every care has been taken to ensure their accuracy, they should not be relied upon and potential buyers are advised to recheck the measurements

%epcGraph_c_1_349%

