



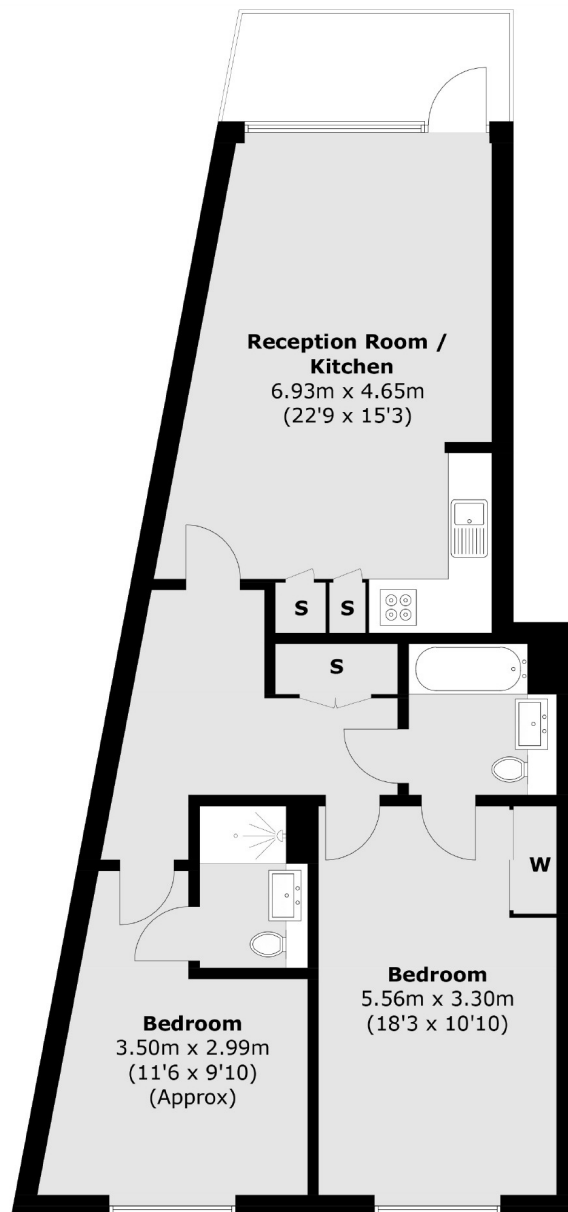
## Lakeside Drive, NW10

£499,950

A modern two bedroom apartment in the popular Lakeside Drive development. Located on the fifth floor the property comes with a private balcony and access to well maintained communal gardens.

Lakeside Drive is within half a mile of both Park Royal and Hanger Lane stations, offering excellent access into town.

- Two Bedrooms • Two Bathrooms • Fifth Floor •



## Fifth Floor

Total area (approx.): 79.8 sq. m (858.9 sq. ft)

Robertson Smith & Kempson Acton Sales  
98 High Street, London, W3  
6QX  
020 8896 3996  
[actonsales@robertsonsmithandkempson.co.uk](mailto:actonsales@robertsonsmithandkempson.co.uk)

Energy Rating: B. We aim to make our particulars both accurate and reliable. However they are not guaranteed; nor do they form part of an offer or contract. If you require clarification on any points then please contact us, especially if you're traveling some distance to view. Please note that appliances and heating systems have not been tested and therefore no warranties can be given as to their good working order.