



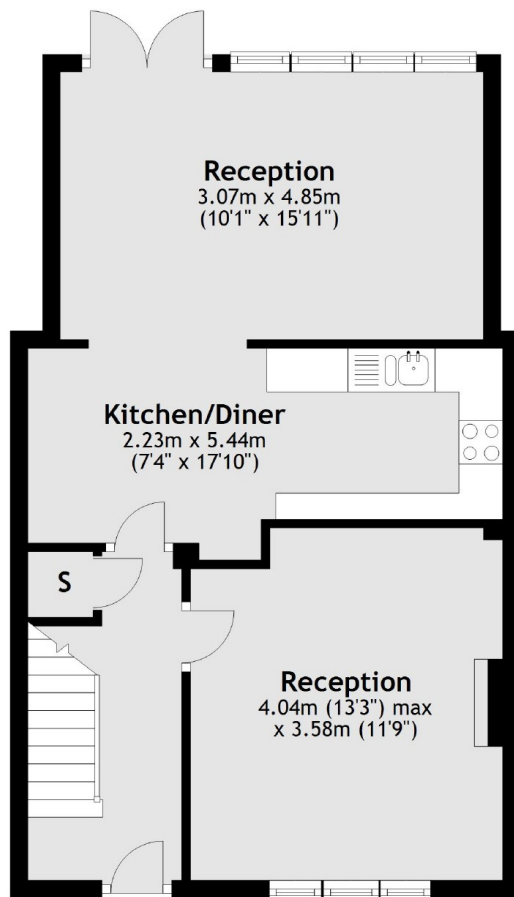
Westcott Crescent, W7

£485,000

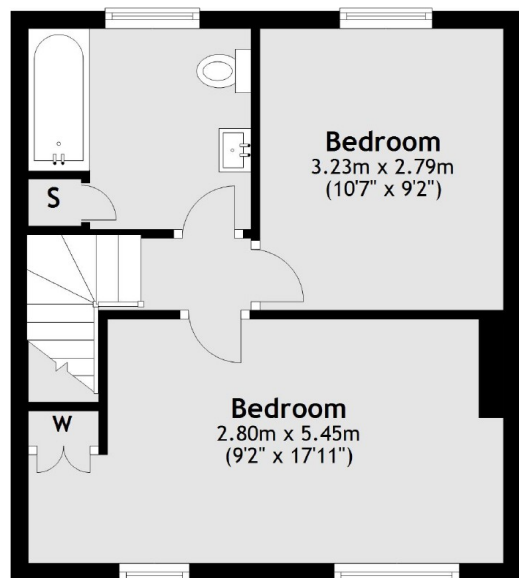
Benefitting from the most outstanding mature landscaped garden with enviable views over Hanwell community centre and recreational grounds, this two double bedrooms extended house is a perfect purchase. Early viewing advised!

Ideally located for Castlebar Park Station, frequent and varied bus links on Bordars Road and Greenford Avenue. Well regarded school catchments to choose from and Hanwell community centre.

Ground Floor



First Floor



Total area: approx. 82.0 sq. metres (882.6 sq. feet)

Robertson Smith & Kempson Hanwell Sales
69 Greenford Avenue,
London, W7 1LL
020 8566 2339
hanwellsales@robertsonsmithandkempson.co.uk

Energy Rating: C. We aim to make our particulars both accurate and reliable. However they are not guaranteed; nor do they form part of an offer or contract. If you require clarification on any points then please contact us, especially if you're traveling some distance to view. Please note that appliances and heating systems have not been tested and therefore no warranties can be given as to their good working order.