

SNELLERS

ESTATE AGENTS



Michelham Gardens, TW1

£975,000

Situated in the much sought and highly desirable Michelham Gardens just 0.1 miles away from Radnor Gardens park and Riverside stands this impressive three bedroom family home.



With the huge benefit of full planning permission for both a loft and rear extension, this immaculately presented property is ideal for those looking for somewhere big and well presented enough to move into straight away, but with the benefit of being able to immediately extend should you wish.

This road is incredibly popular with local families looking for great school catchments, a quiet location and with both Twickenham and Teddington high streets close by.

Michelham Gardens is based in Strawberry Hill and known for its proximity to Twickenham High Street and Teddington. The river is easily accessible with Radnor Gardens just 0.2 miles away. Strawberry Hill and Twickenham train stations are based just 0.4 and 1.0 miles away respectively.

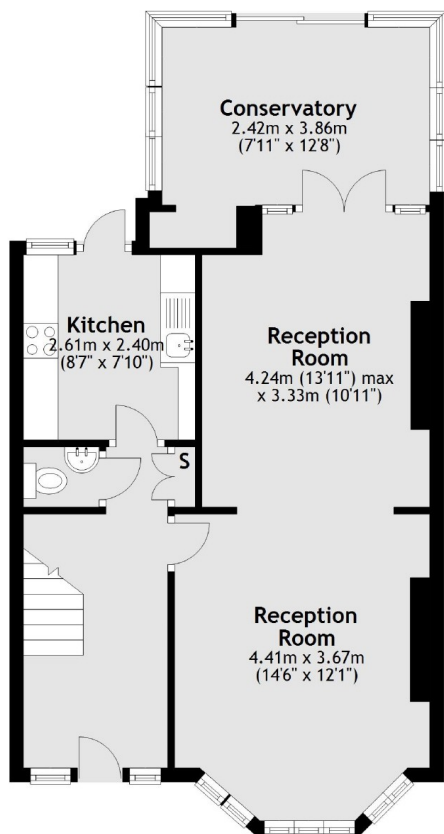
- Three Bedrooms • Off Road Parking • Planning Permission •
- Sought After Road • Immaculately Presented • 0.1 Miles to Radnor Gardens •



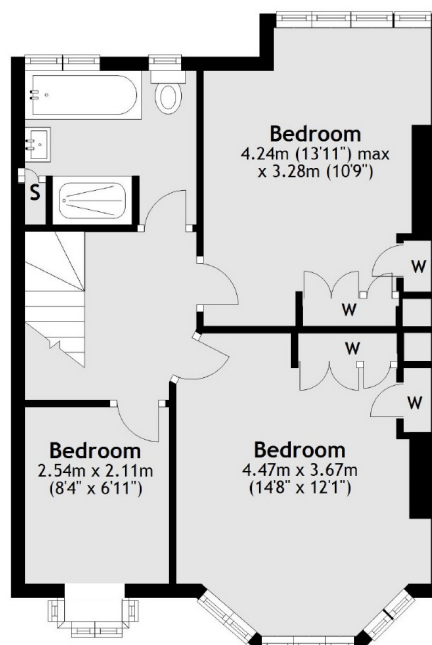
SNELLERS

ESTATE AGENTS

Ground Floor



First Floor



Total area: approx. 103.9 sq. metres (1117.9 sq. feet)

Snellers Twickenham Sales
74 Heath Road
Twickenham
TW1 4BW
020 8892 5555
twickenhamsales@snellers.co.uk

Energy Rating: D We aim to make our particulars both accurate and reliable. However they are not guaranteed; nor do they form part of an offer or contract. If you require clarification on any points then please contact us, especially if you're traveling some distance to view. Please note that appliances and heating systems have not been tested and therefore no warranties can be given as to their good working order