



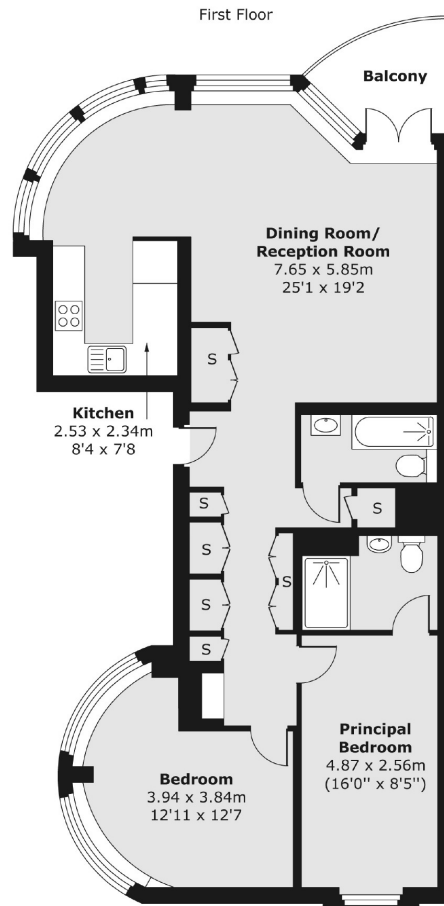
Shad Thames, SE1

£950,000

Located in the heart of Shad Thames, this two double bedroom flat is in immaculate condition and boasts two bathrooms, a bright and airy

Compass Court is surrounded by the shops, restaurants and delis of Shad Thames and is only 0.4 miles from London Bridge station

- Two Double Bedrooms • Two Bathrooms • Excellent Condition • Private Balcony • Parking • Incredible Location •



Total area (approx.) 87.38 sq. m (941 sq. ft)

Balcony area (approx.) 4.42 sq. m (48 sq. ft)

City Docklands
205 Tooley Street
London, SE1 2JX
020 7234 0880
welcome@citydocklands.com

Energy Rating: . We aim to make our particulars both accurate and reliable. However they are not guaranteed; nor do they form part of an offer or contract. If you require clarification on any points then please contact us, especially if you're traveling some distance to view. Please note that appliances and heating systems have not been tested and therefore no warranties can be given as to their good working order.