

TO LET

- One double bedroom
- Second floor flat
- Spacious living room
- Modern Kitchen
- Gas central heating
- Secure communal entrance
- Part furnished
- Balcony



Scholefield Road, Holloway, London, N19
£1,250 Per Calendar Month

Anthony Webb
ESTATE AGENTS



Scholefield Road, Holloway, London, N19

SPACIOUS ONE DOUBLE BEDROOM FLAT WITH BALCONY WITHIN EASY REACH OF ARCHWAY UNDERGROUND AND LOCAL SHOPS/BUS ROUTES.

Purpose built block • Second floor apartment • Secure communal entrance • Spacious living room with laminate floor and door to balcony • Modern kitchen with appliances • Double bedroom with large storage cupboard/wardrobe • Bathroom • PART FURNISHED • AVAILABLE FROM 2ND JANUARY 2021.

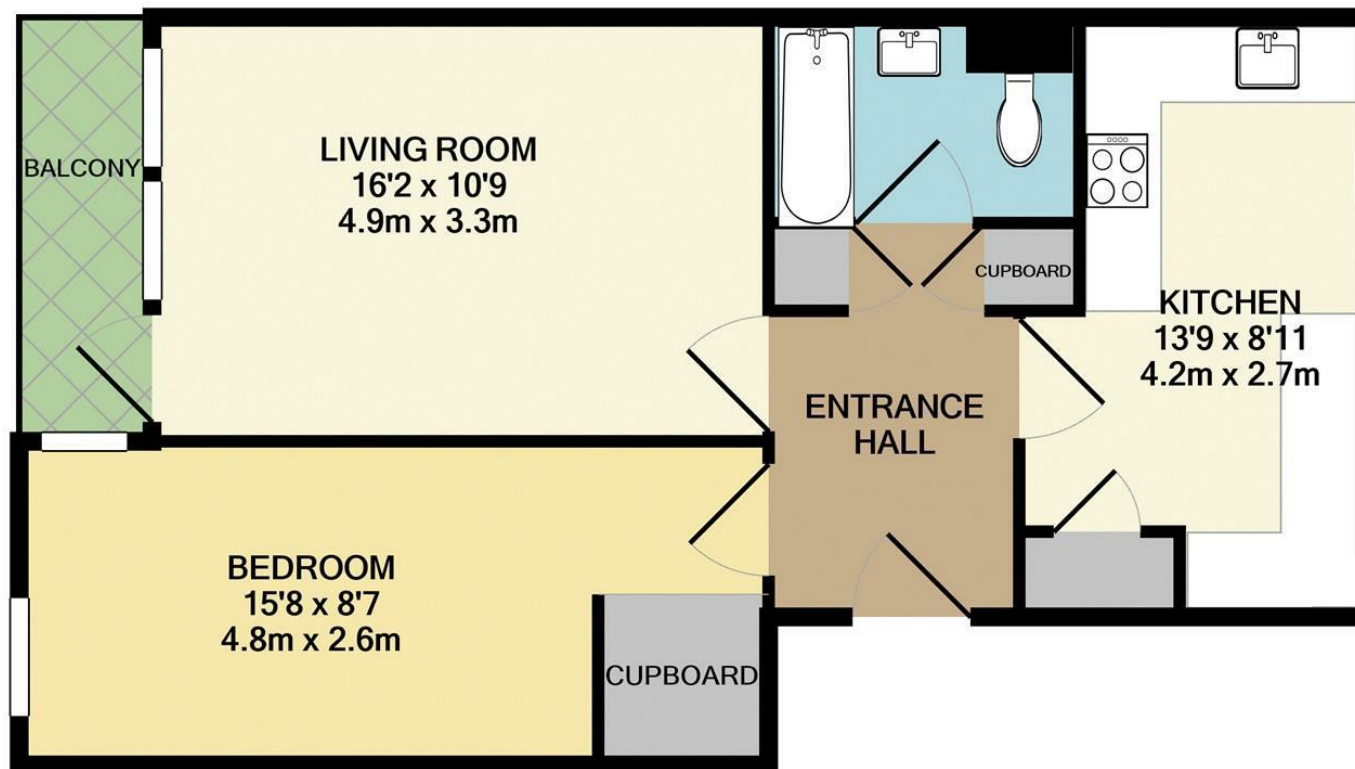


Energy Efficiency Rating		
	Current	Potential
Very energy efficient - lower running costs		
(92 plus) A		
(81-91) B		
(69-80) C		
(55-68) D		
(39-54) E		
(21-38) F		
(1-20) G		
Not energy efficient - higher running costs		
England & Wales EU Directive 2002/91/EC		
Environmental Impact (CO ₂) Rating		
	Current	Potential
Very environmentally friendly - lower CO ₂ emissions		
(92 plus) A		
(81-91) B		
(69-80) C		
(55-68) D		
(39-54) E		
(21-38) F		
(1-20) G		
Not environmentally friendly - higher CO ₂ emissions		
England & Wales EU Directive 2002/91/EC		



348 Green Lanes, Palmers Green, London N13 5TJ
020 8882 7888
palmersgreen@anthonywebb.co.uk
anthonywebb.co.uk

Anthony Webb
ESTATE AGENTS



TOTAL APPROX. FLOOR AREA 560 SQ.FT. (52.0 SQ.M.)

Whilst every attempt has been made to ensure the accuracy of the floor plan contained here, measurements of doors, windows, rooms and any other items are approximate and no responsibility is taken for any error, omission, or mis-statement. This plan is for illustrative purposes only and should be used as such by any prospective purchaser. The services, systems and appliances shown have not been tested and no guarantee as to their operability or efficiency can be given

Made with Metropix ©2020