



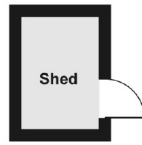
Myrtle Road, W3

£1,100,000

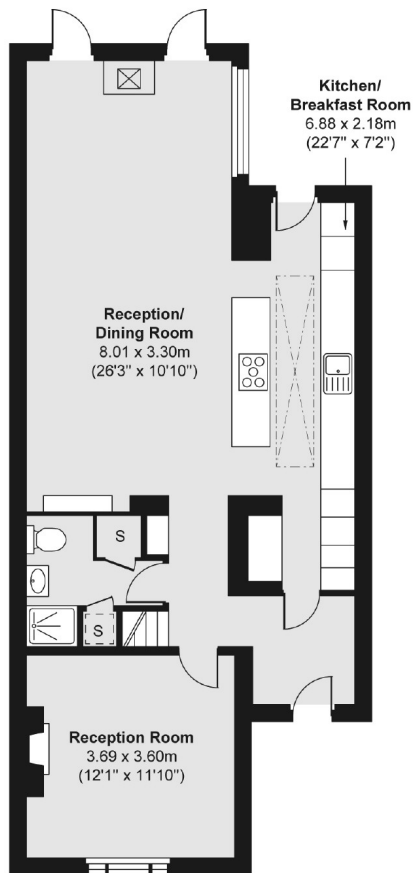
A stunning three bedroom family home with a west facing garden located in the heart of Poets Corner. This pretty Victorian property has been immaculately finished having been extended and refurbished throughout by the current owners

Myrtle Road is located within 500 metres of Acton Central station and just over half a mile from Acton Mainline.

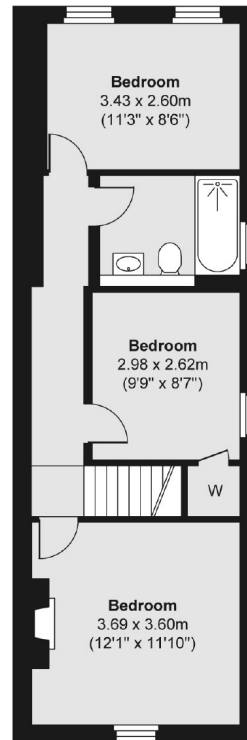
- Three Bedrooms • Two Bathroom • West Facing Garden •
- Immaculate Condition • Victorian • Poets Corner •



Ground Floor



First Floor



Total area (approx.) 115.25 sq. m (1,241 sq. ft)
Shed area (approx.) 2.80 sq. m (30 sq. ft)

Robertson Smith & Kempson Acton Sales
137 High Street, Acton,
London, W3 6LY
020 8896 3996
actonsales@robertsonsmithandkempson.co.uk

Energy Rating: . We aim to make our particulars both accurate and reliable. However they are not guaranteed; nor do they form part of an offer or contract. If you require clarification on any points then please contact us, especially if you're traveling some distance to view. Please note that appliances and heating systems have not been tested and therefore no warranties can be given as to their good working order.