



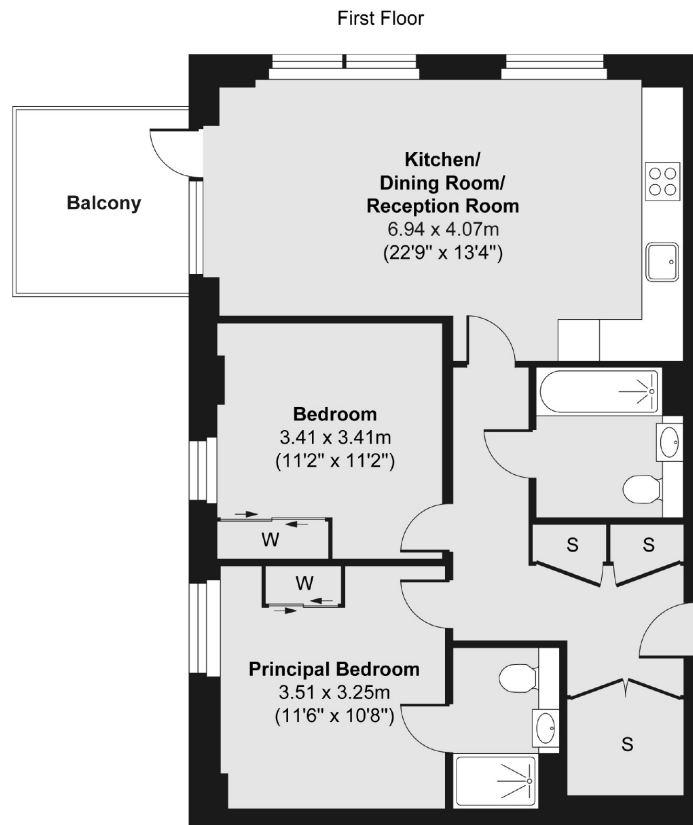
## Arts Lane, SE16

£475 pw (£2,058.33 pcm)

Modern two bedroom, two bathroom property situated on the first floor of this popular development. The property is furnished to a high standard and features wood flooring, two balconies, on site concierge and residents gym.

The Pitman Building is part of the recently developed area in the heart of Bermondsey, less than 0.3 Miles from the Jubilee Line. Maltby street market is close by, as is London Bridge and Shad Thames

- Two bedrooms • Two bathrooms • Wood flooring •
- Contemporary finish • On site gym and concierge • Two private balconies •



Total area (approx.) 71.45 sq. m (769 sq. ft)

Balcony area (approx.) 6.63 sq. m (71 sq. ft)

Energy Rating: . We aim to make our particulars both accurate and reliable. However they are not guaranteed; nor do they form part of an offer or contract. If you require clarification on any points then please contact us, especially if you're traveling some distance to view. Please note that appliances and heating systems have not been tested and therefore no warranties can be given as to their good working order.