

# FLETCHERS

ESTATE AGENTS



## Cleveland Avenue, W4

£775,000

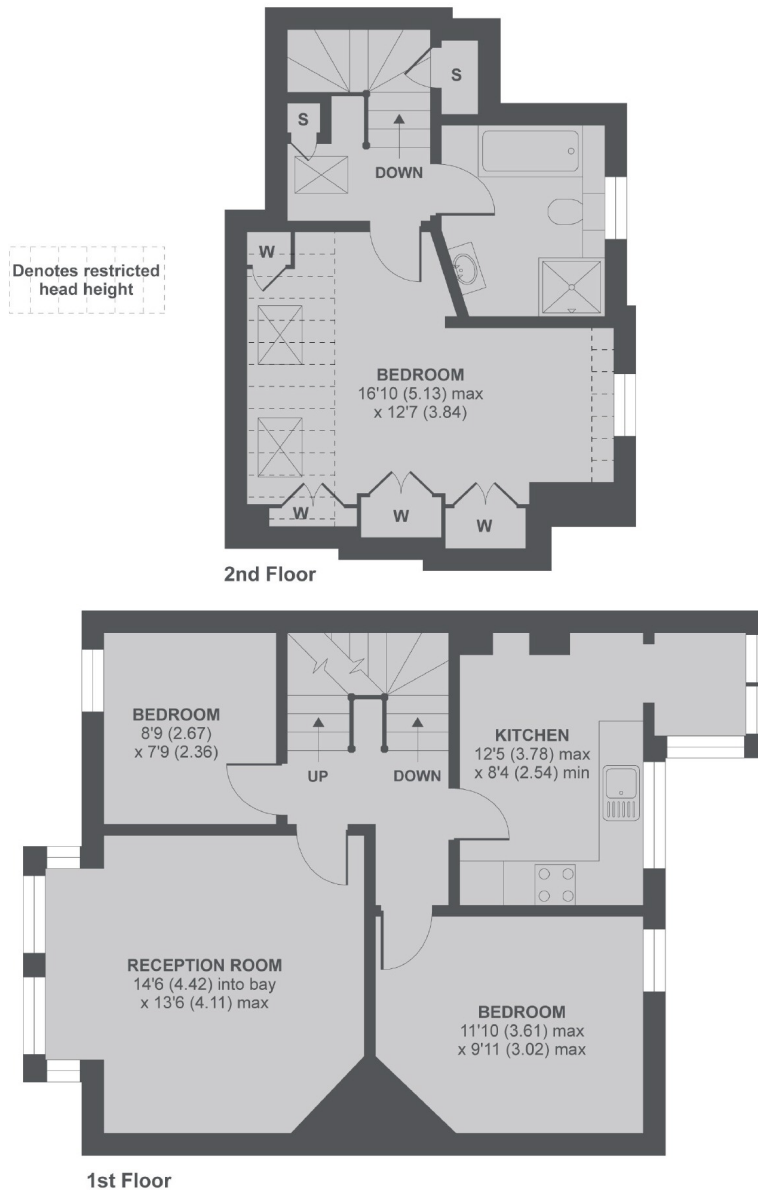
A first and second floor three bedroom Edwardian maisonette with a bathroom, a kitchen/breakfast room and a 14'6 reception room.

Cleveland Avenue is ideally located off Chiswick High Road within a quarter of a mile from Turnham Green and Stamford Brook underground stations.

- Three Bedrooms • Maisonette • First and Second Floor • Large Reception • Bath/Shower Room • Underground Stations •

# FLETCHERS

ESTATE AGENTS



## Cleveland Avenue W4

MAIN HOUSE APPROX FLOOR AREA 920 SQ.FT 85.4 SQ.M (INCLUDES RESTRICTED HEAD HEIGHT)

Copyright nichecom.co.uk 2017 REF : 223546

Fletchers Chiswick Sales  
58 Turnham Green Terrace,  
London, W4 1QP  
020 8987 3000  
chiswicksales@fletcherestates.com

Energy Rating: E. We aim to make our particulars both accurate and reliable. However they are not guaranteed; nor do they form part of an offer or contract. If you require clarification on any points then please contact us, especially if you're traveling some distance to view. Please note that appliances and heating systems have not been tested and therefore no warranties can be given as to their good working order.