

# FLETCHERS

ESTATE AGENTS



## Ennismore Avenue, W4

£675,000

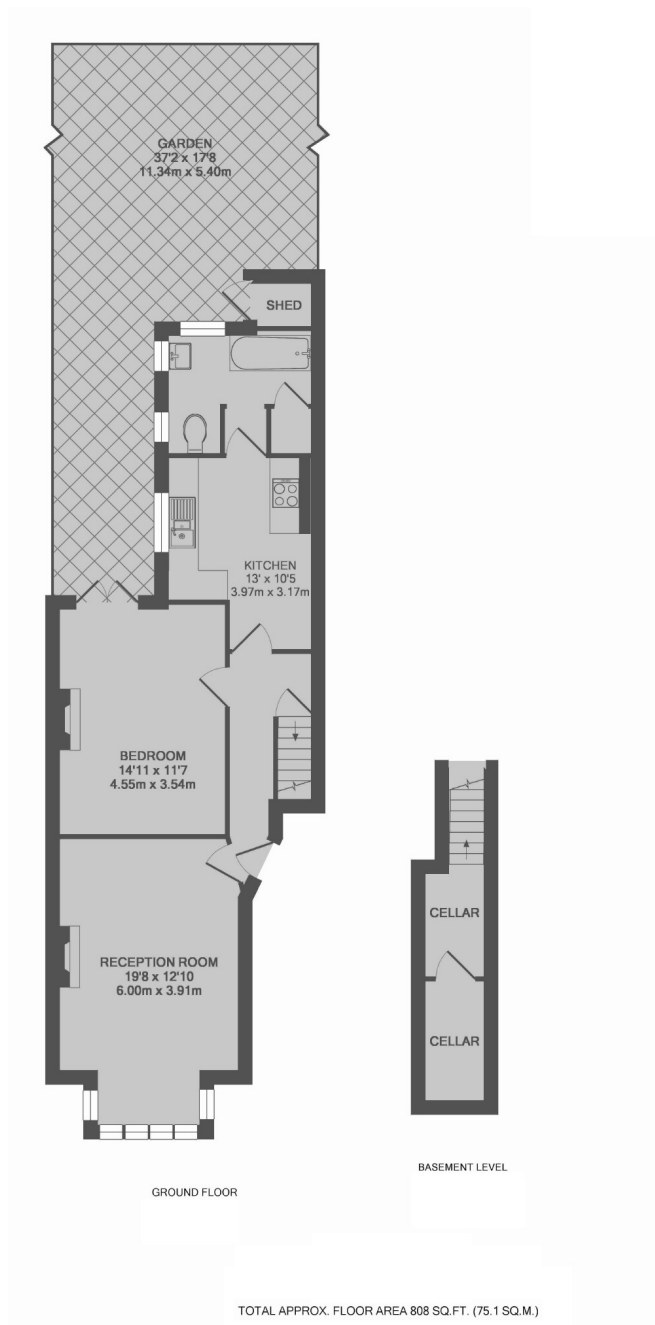
A beautifully presented, spacious one bedroom ground floor Edwardian conversion with generously proportioned rooms and many remaining period features including a feature fireplace in the living room. The property benefits from a large rear garden that enjoys a decking area leading nicely onto the lawn, perfect for a relaxing sunny day.

Ennismore Avenue is a quiet residential cul-de-sac, conveniently located just off Chiswick High Road, with easy access to excellent shops, restaurants and cafes as well as both Turnham Green and Stamford Brook underground stations.

- 1 Bedroom Flat • Ground Floor • Eat In Kitchen • Well Proportioned • Rear Garden • Cellar •

# FLETCHERS

ESTATE AGENTS



Fletchers Chiswick Turnham Green  
Terrace Sales  
58 Turnham Green Terrace, London,  
W4 1QP  
020 8987 3000

Energy Rating: . We aim to make our particulars both accurate and reliable. However they are not guaranteed; nor do they form part of an offer or contract. If you require clarification on any points then please contact us, especially if you're traveling some distance to view. Please note that appliances and heating systems have not been tested and therefore no warranties can be given as to their good working order.