

FLETCHERS

ESTATE AGENTS



Alexandra Gardens, W4

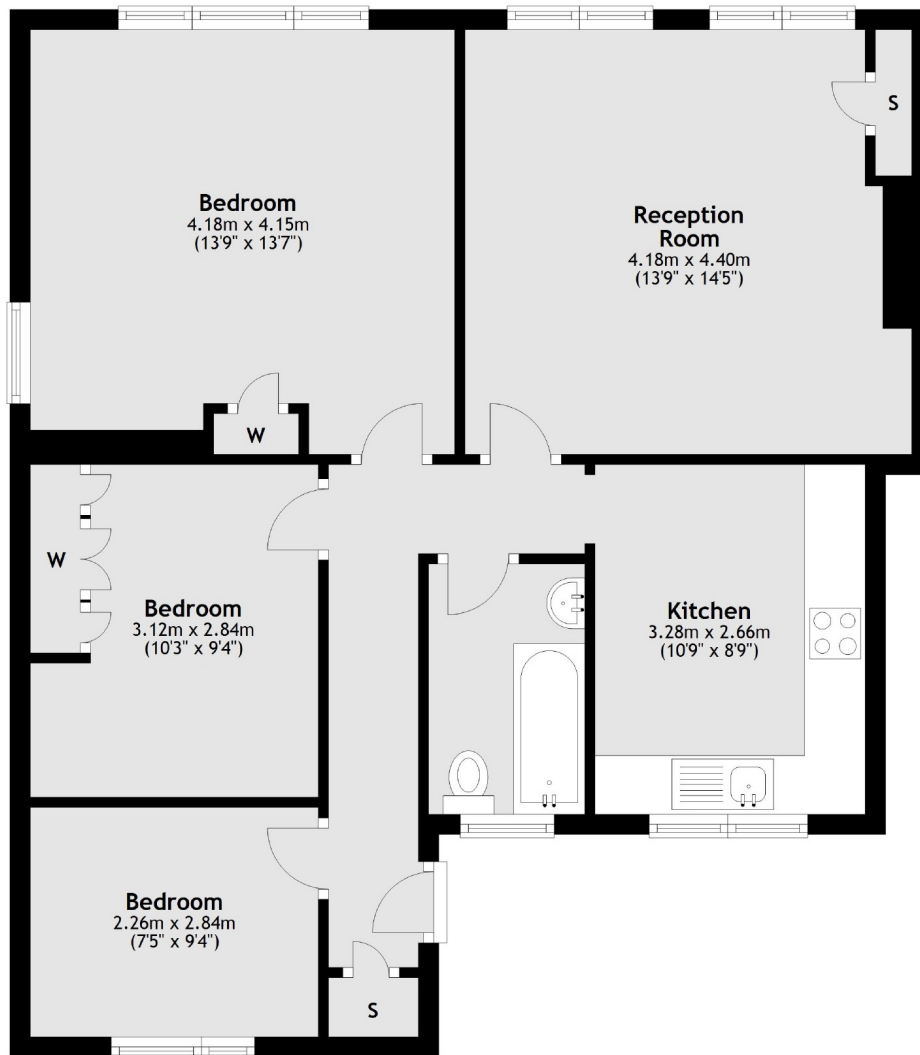
£425,000

This three bedroom purpose built flat benefits from superb lateral space (c. 794 sq ft). A separate eat-in kitchen is accompanied by a spacious reception room, and three double bedrooms.

Alexandra Gardens is in the centre of Chiswick with access to the Thames and Chiswick House nearby. Chiswick Station is less than 0.5m away and further to the North is the popular Chiswick High Road with plenty to do.

- Three Double Bedrooms • Eat-In Kitchen • Large Reception • Communal Parking • Second Floor • Purpose Built •

Second Floor



Total area: approx. 73.8 sq. metres (794.1 sq. feet)

Fletchers Chiswick Turnham Green Sales
58 Turnham Green Terrace, London, W4 1QP
020 8987 3000
chiswicksales@fletcherestates.com

Energy Rating: D. We aim to make our particulars both accurate and reliable. However they are not guaranteed; nor do they form part of an offer or contract. If you require clarification on any points then please contact us, especially if you're traveling some distance to view. Please note that appliances and heating systems have not been tested and therefore no warranties can be given as to their good working order.