



The Thatched Cottage, Masons Lane
Bradford On Avon, BA15 1QL



The Thatched Cottage, 1 Masons Lane, Bradford On Avon, BA15 1QL

Occupying a commanding elevated central location on the Bath side, in the heart of one of the most popular market towns in the West Country. We are delighted to offer for sale this beautiful 2 Bedroom Detached Thatched Cottage with a SOUTH FACING ASPECT

- Stunning Thatched Cottage
- Elevated Central Location
- Enclosed Private Gardens
- Wealth of Character & Charm
- Two Double Bedrooms
- Ideal Holiday Home Option
- Walking Distance To All Towns Facilities & Train Station

£400,000



OCCUPYING A COMMANDING SOUTH FACING ELEVATED CENTRAL LOCATION IN BRADFORD ON AVON, one of the most popular market towns in the West Country, We are delighted to offer for sale this BEAUTIFUL 2 BEDROOM DETACHED CHARACTER THATCHED COTTAGE. The property having been greatly improved and updated by the current owner, offers a wealth of charm but incorporating some contemporary benefits of design. Approaching the entrance to the house, with a magnificent front door beneath a canopied doorway, there is an immediate sense of keen anticipation to see more. The welcoming entrance hall has a flagstone floor, which then leads up to the main living space, the principal feature of which is the main living/dining room with stone fireplace, natural timber flooring and a sunny front aspect through Gothic style leaded windows. There is a good size free standing farmhouse style kitchen/breakfast room with splendid flagstone floor, Danish Oil treated work surfaces, painted exposed stonework and a large flank window affording good natural light. At first floor level there are two double bedrooms with charming sloping ceilings and a en- suite. Outside, the gardens have been landscaped to create level areas for enjoying the outside space. The property is being offered for sale with NO ONWARD CHAIN

Property Information
Council Tax Band: E

Freehold

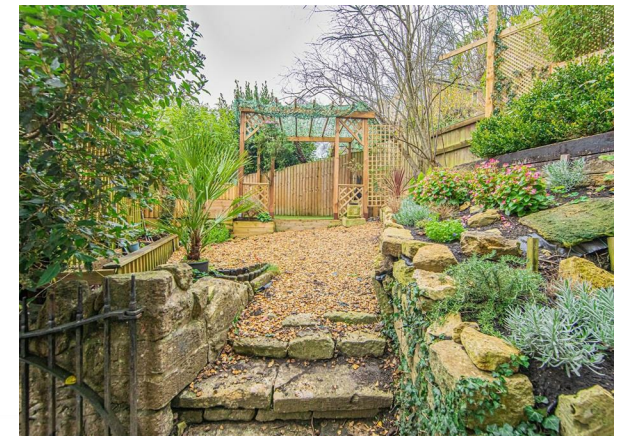
Gas Central Heating

Mains Services

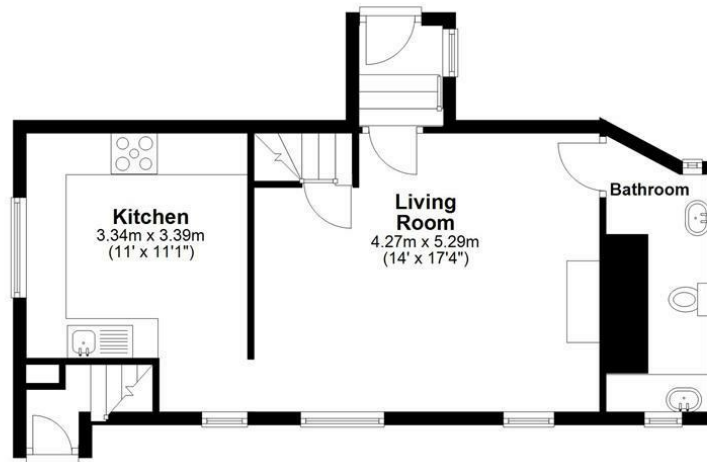
EPC Rating: F

Situation

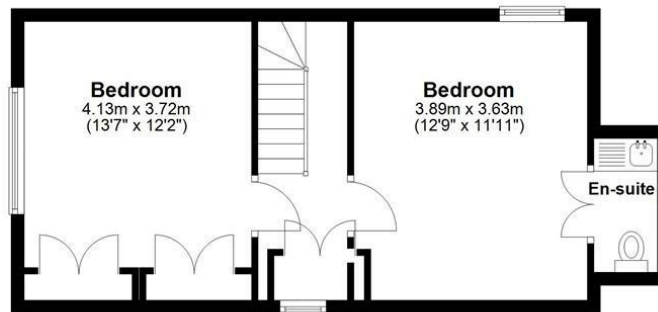
Bradford on Avon has a range of shops, public houses, indoor swimming pool, public library and near by railway station. The property also offers access to the Tithe Barn, Kennett and Avon canal, golf course and delightful countryside, riverside and canal side walks. The further amenities of Trowbridge are approximately 2 miles away, with the stunning Georgian city of Bath approximately 9 miles away.



Ground Floor



First Floor



The Thatched Cottage, 1 Masons Lane, Bradford On Avon, BA15 1QL

Tel: 01249 712039

Email: corsham@strakers.co.uk

www.strakers.co.uk

■ Chippenham

■ Corsham

■ Devizes

■ Malmesbury

■ Auctions

■ Lettings

■ New Homes

■ Professional Dept