

TATES

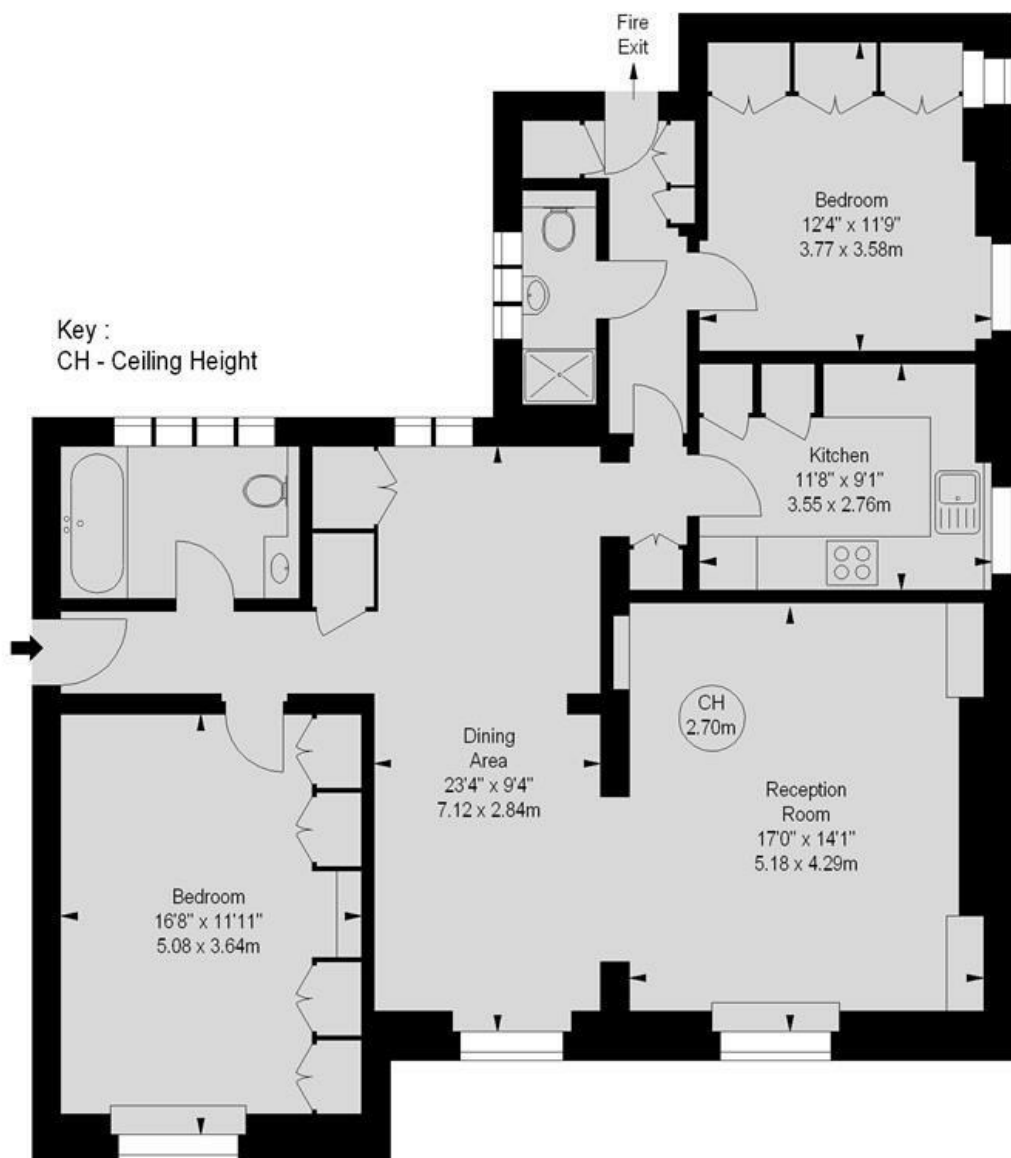
Residential Sales & Lettings



North End House, Fitzjames Avenue, W14 0RS £925,000

- Excellent Condition Throughout
- Large Reception Area
- Share of Freehold
- 24/7 Porterage
- West Kensington (District Line)
- Fourth Floor
- Two Double Bedrooms
- Communal Gardens
- Barons Court Tube (District & Piccadilly Lines)
- Kensington High Street Close By

North End House,
Fitzjames Avenue, W14
Approximate gross internal area
1,156 sq ft / 107.40 sq m



Fourth Floor

Illustration For Identification Purposes Only. Not To Scale
*Floorplan Drawn According To RICS Guidelines

Whilst these particulars are believed to be correct, no guarantee can be given for the measurements, appliances or services. It is our recommendation that all are tested. These are not intended to form part of any contract. Tate's accept no responsibility for their accuracy.

Energy Efficiency Rating		
	Current	Potential
Very energy efficient - lower running costs		
(92 plus) A		
(81-91) B		
(69-80) C		
(55-68) D		
(39-54) E		
(21-38) F		
(1-20) G		
Not energy efficient - higher running costs		
England & Wales		EU Directive 2002/91/EC

135 Hammersmith Rd London W14 0QL

T. 020 7602 6020 F. 020 7602 9522

mail@tatesestates.co.uk

tatesestates.co.uk

Tates (Agents) Ltd. Registered in England and Wales No. 2356337

Registered Office: 4th Floor Imperial House, 15 Kingsway London WC2B 6U

