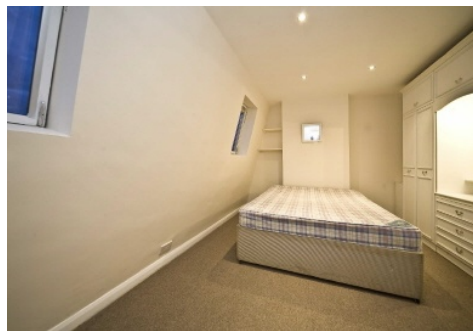


Chard

Lettings



Anselm Road, SW6

£485 pw (£2,100 pcm)

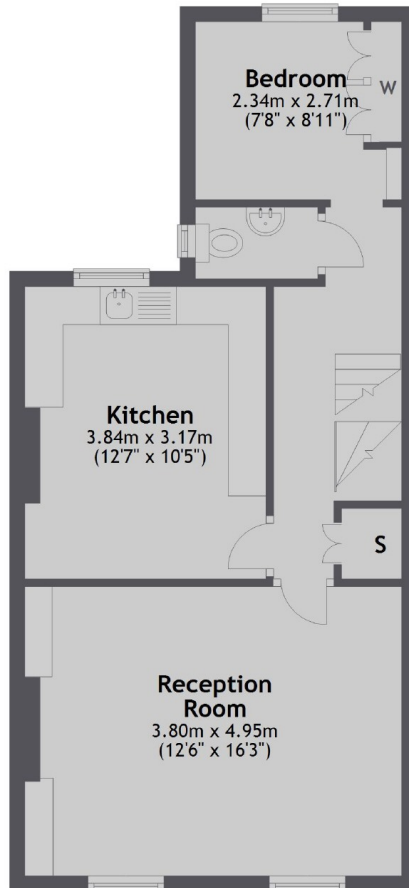
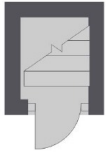
This spacious split level Victorian conversion, three bedroom apartment on Anselm Road offers a large reception room, a separate eat in kitchen and is located off North End Road, close to all local amenities and transport links.

Anselm Road is located off North End Road with a wide selection of local amenities, restaurants and bars all on your doorstep. There is also excellent transport links available with Fulham Broadway and West Brompton (District line) stations close by.

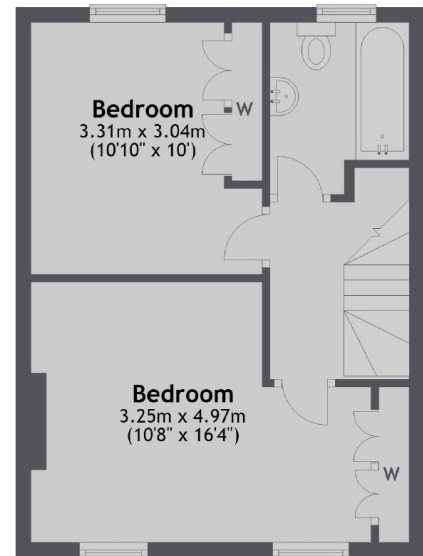
- Three Double Bedrooms
- Spacious Living Room
- Separate Eat in

First Floor

Ground Floor



Second Floor



Total area: approx. 82.1 sq. metres (884.0 sq. feet)

Chard Fulham
5 Harwood Road,
London, SW6 4QP
020 7384 1400
fulhamlettings@chard.co.uk

Energy Rating: D. We aim to make our particulars both accurate and reliable. However they are not guaranteed; nor do they form part of an offer or contract. If you require clarification on any points then please contact us, especially if you're traveling some distance to view. Please note that appliances and heating systems have not been tested and therefore no warranties can be given as to their good working order.