

# TATES

Residential Sales & Lettings



## Lily Close, St Pauls Court W14 9YA

**£835,000**

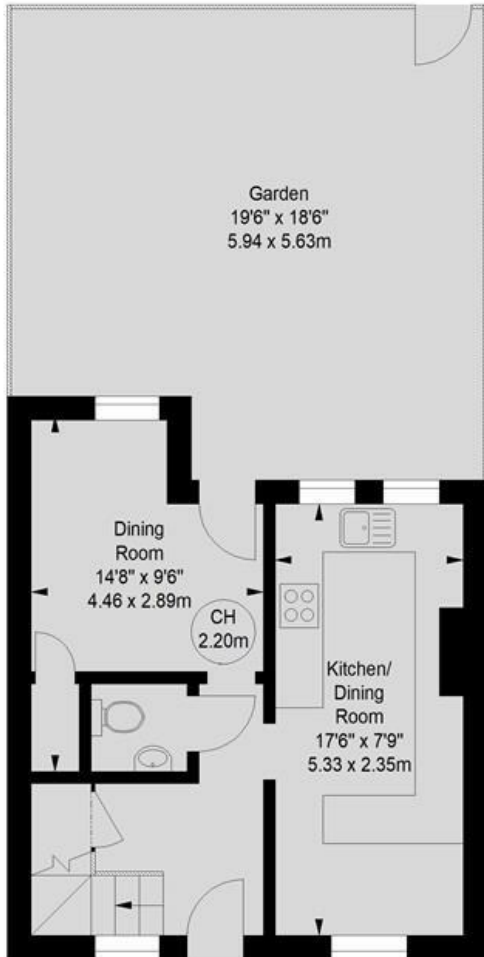
- Three Bedroom Townhouse
- Kitchen Breakfast Room
- Good Condition
- Barons Court (District & Piccadilly Lines)
- Hammersmith Bus Terminus
- West Facing Garden
- Secure Underground Parking
- Share of Freehold
- Hammersmith Broadway (District, Piccadilly, Hammersmith & City Lines)

# Lily Close, W14

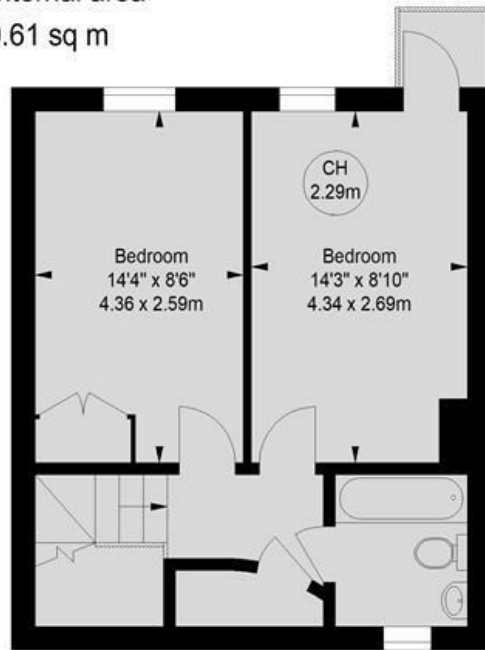
Approximate gross internal area  
1,083 sq ft / 100.61 sq m



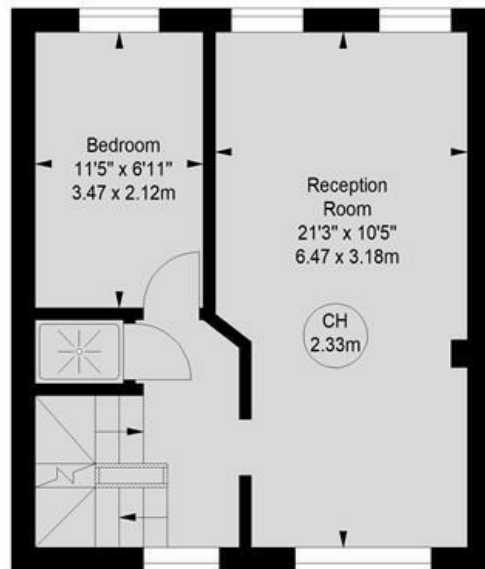
Key :  
CH - Ceiling Height



Ground Floor  
333 sq ft



Second Floor  
375 sq ft



First Floor  
375 sq ft

Illustration For Identification Purposes Only. Not To Scale  
\*Floorplan Drawn According To RICS Guidelines

Whilst these particulars are believed to be correct, no guarantee can be given for the measurements, appliances or services. It is our recommendation that all are tested. These are not intended to form part of any contract. Tate's accept no responsibility for their accuracy.

135 Hammersmith Rd London W14 0QL.  
T. 020 7602 6020 F. 020 7602 9522  
mail@tatesestates.co.uk  
tatesestates.co.uk

Tates (Agents) Ltd. Registered in England and Wales No. 2356337  
Registered Office: 4th Floor Imperial House, 15 Kingsway London WC2B 6U

Energy Efficiency Rating		
	Current	Potential
Very energy efficient - lower running costs		
(92 plus) <b>A</b>		
(81-91) <b>B</b>		
(69-80) <b>C</b>	75	77
(55-68) <b>D</b>		
(39-54) <b>E</b>		
(21-38) <b>F</b>		
(1-20) <b>G</b>		
Not energy efficient - higher running costs		
<b>England &amp; Wales</b>		
	EU Directive 2002/91/EC	

