



## New Kings Road, SW6

£463 pw (£2,008 pcm)

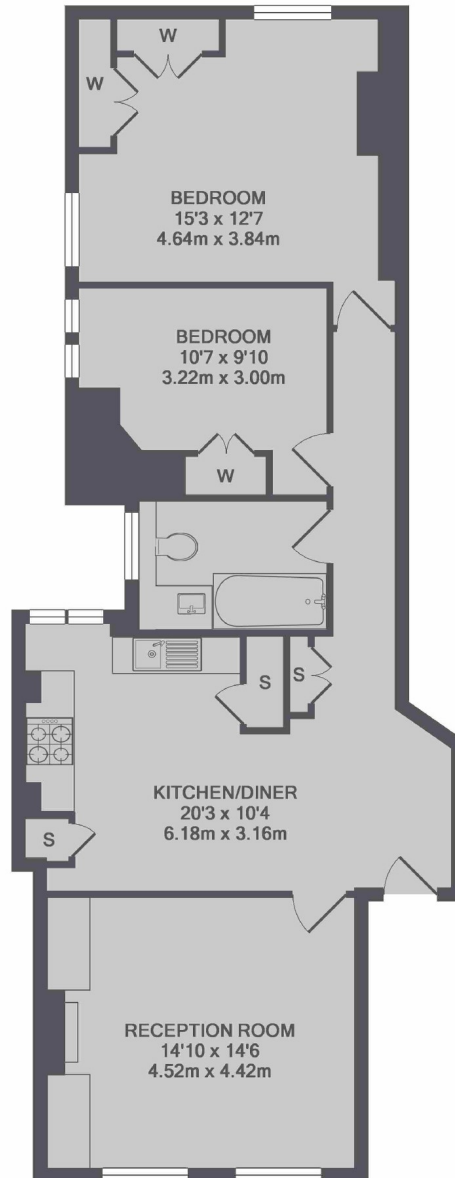
This bright and spacious two bedroom mansion flat has a large separate reception, integrated eat-in kitchen with dining area, a family size bathroom and two double bedrooms with built-in storage. This property has good natural light, great views and period features.

Churchfield Mansions is close to Parsons Green station with many bus routes leading into Putney and the city. This property is close to a variety of superstores with local amenities on Parsons Green lane and a selection of highly recommended restaurants and cafés.

Two Double Bedrooms   Spacious Reception   Integrated Kitchen  
Modern Bathroom   Fourth Floor   Parsons Green

# Chard

Lettings



TOTAL APPROX. FLOOR AREA 848 SQ.FT. (78.8 SQ.M.)

Chard Fulham Lettings  
5 Harwood Road,  
London, SW6 4QP  
020 7384 1400  
fulhamlettings@chard.co.uk

Energy Rating: D. We aim to make our particulars both accurate and reliable. However they are not guaranteed; nor do they form part of an offer or contract. If you require clarification on any points then please contact us, especially if you're traveling some distance to view. Please note that appliances and heating systems have not been tested and therefore no warranties can be given as to their good working order.