



## Abbeville Road, SW4

£1,700,000

\*\* Price Guide £1,700,000 -£1,750,000 \*\* A beautifully presented family house which has been expertly remodelled to deliver a quite superb open plan living space, which leads on to the larger than average

- Wide Open Plan Ground Floor
- One Double Reception Room
- Full Width Kitchen/Dining Room
- Three Bathrooms
- Large Private Garden
- Beautifully Presented
- Stylishly Configured



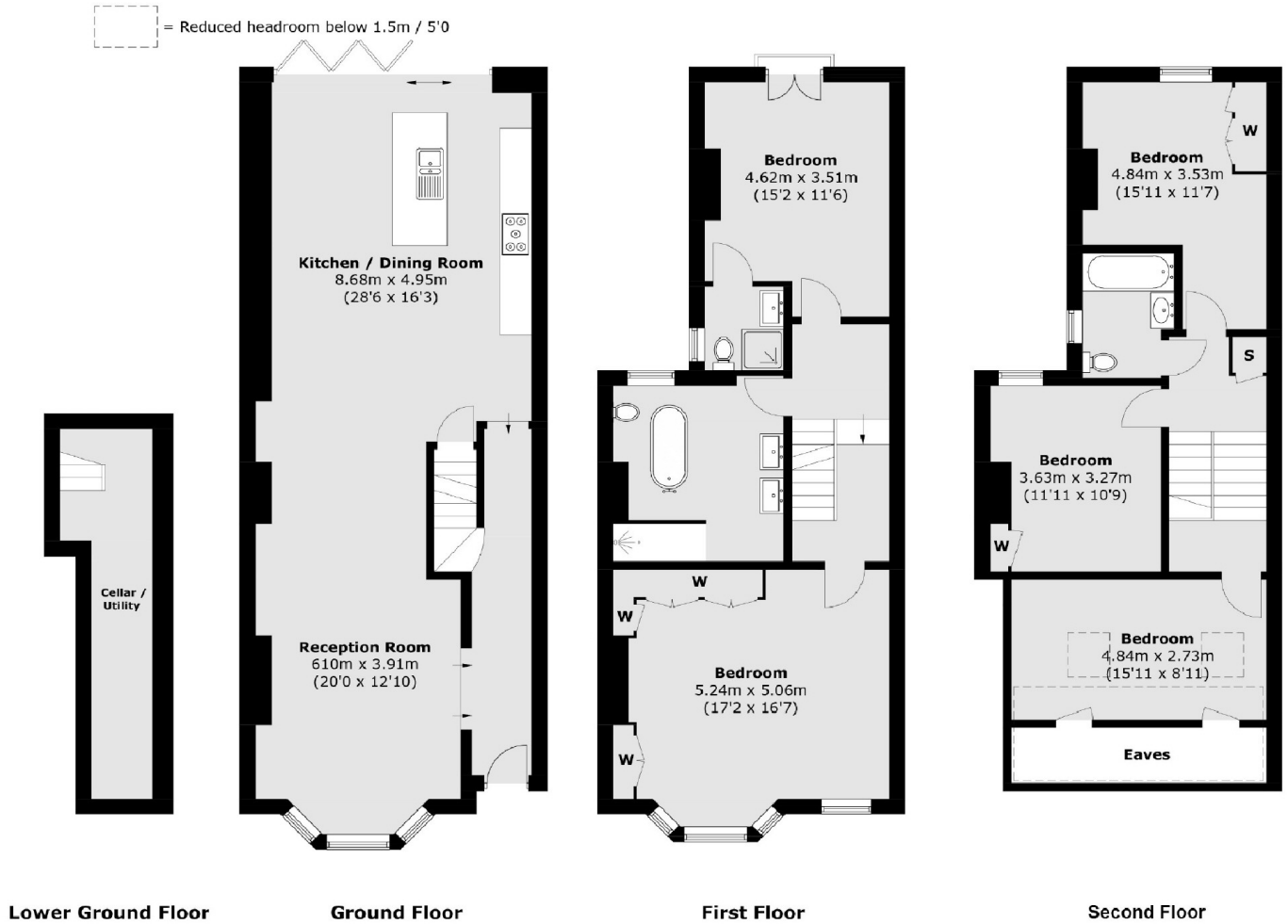
With five bedrooms arranged over three floors, served by three incredible bathrooms, one of which was a former bedroom and another en-suite to a guest bedroom, the perfect configuration is complemented by crisply decorated rooms and neutral carpeting.

Abbeville Road is one of the premier residential roads in the area, being close to but not on top of the local village shops, bars and restaurants, yet convenient for the common and tube stations at Clapham South and Clapham Common.









Total area (approx.): 209.1 sq. m (2,251.0 sq. ft)  
 (Excluding Eaves / Including Restricted Head Height)

Jacksons Clapham  
 73 Abbeville Road  
 London  
 SW4 9JN  
 020 8875 7995  
[clapham.sales@jacksonsestateagents.com](mailto:clapham.sales@jacksonsestateagents.com)

Energy Rating: D We aim to make our particulars both accurate and reliable. However they are not guaranteed; nor do they form part of an offer or contract. If you require clarification on any points then please contact us, especially if you're traveling some distance to view. Please note that appliances and heating systems have not been tested and therefore no warranties can be given as to their good working order.