



elite
property

Sterling House, 112 Walsgrave Road, Stoke, Coventry, West Midlands, CV2 4ED

Tel: 024 7665 2200

Fax: #

www.eliteproperty.co



Victoria Court, 10 Davenport Road, Earlsdon, Coventry, CV5 6QL

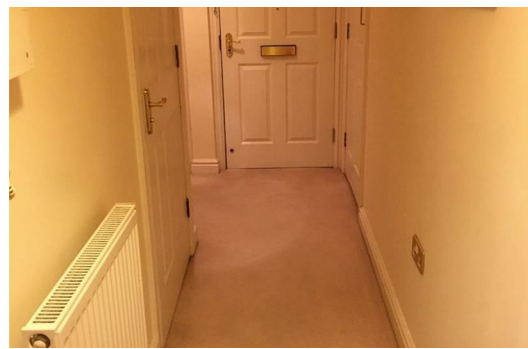
£1,150 PCM

A Truly unique opportunity to rent a remarkable 3 bedroom executive penthouse in this luxury development set within private and mature grounds. The property is offered on a Fully furnished basis and equipped to the highest standard.

Both master bedrooms have en-suite facilities and there is a further guest W.C. The fully fitted kitchen includes integrated oven & hob, fridge/freezer, washer/dryer and dishwasher. The property is alarmed and benefits from a security video intercom system.

EPC Rating: C

Available from 31st March 2021



Energy Efficiency Rating		
	Current	Potential
Very energy efficient - lower running costs		
(92 plus) A		
(81-91) B		
(69-80) C		
(55-68) D		
(39-54) E		
(21-38) F		
(1-20) G		
Not energy efficient - higher running costs		
England & Wales		
EU Directive 2002/91/EC		

Environmental Impact (CO ₂) Rating		
	Current	Potential
Very environmentally friendly - lower CO2 emissions		
(92 plus) A		
(81-91) B		
(69-80) C		
(55-68) D		
(39-54) E		
(21-38) F		
(1-20) G		
Not environmentally friendly - higher CO2 emissions		
England & Wales		
EU Directive 2002/91/EC		

PLEASE NOTE: General Information

We have been informed by the vendor that the tenure of the property is Freehold. However, you are recommended to have this information verified by your legal advisor at the earliest opportunity. All measurements are approximate and quoted in metric and are for general guidance only and whilst every attempt has been made to ensure accuracy, they must not be relied on. The fixture, fittings and appliances referred to have not been tested and therefore no guarantee can be given that they are in working order. Internal photos are produced for internal general information and it must not be inferred that any item would be included within the sale.