



Grove Avenue, W7

£1,050,000

An outstanding five/six bedroom imposing detached house located in this much sought after location with exceptional views over Brent Valley Golf course. Attractively priced and looking for it's next family to enjoy.

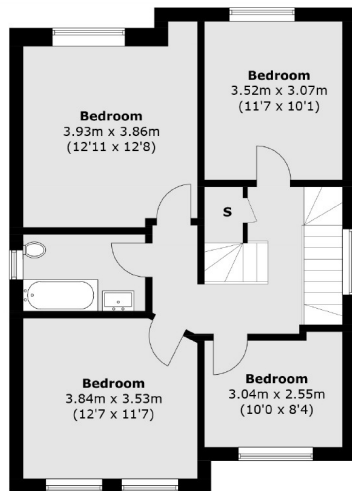


Set over four floors and stretching to over 2600 sq ft, this truly is a rarely available gem. On the lower ground floor (which has a separate entrance) comprises potential for self contained flat with double bedroom, kitchen, family bathroom and generous reception. The ground floor comprises downstairs toilet, kitchen and double reception leading to the mature secluded garden. On the first floor are four double bedrooms and an additional family bathroom. Loft room consists of another double bedroom and en-suite shower-room. Outside benefits of off-street parking to the front.

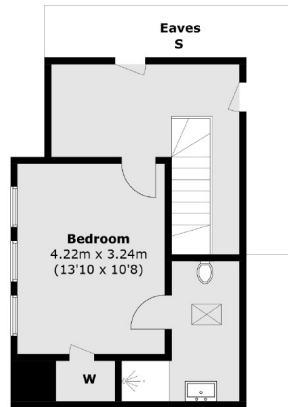
Ideally located for Hanwell Station (Crossrail) and Brent Valley Golf Course for keen golfers. Many varied and frequent bus links on Greenford Avenue.

- Detached House • Five/Six Bedrooms • Off-Street Parking •
- Unique Views • Over 2600 Sq Ft • Hanwell Station (Crossrail) •

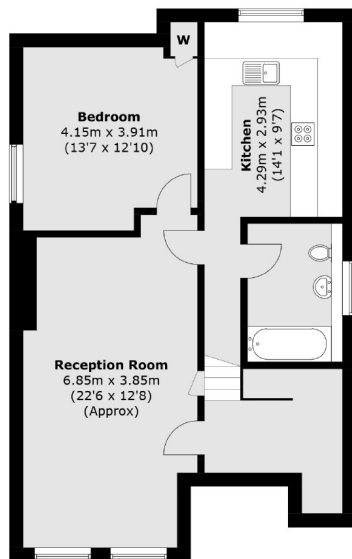




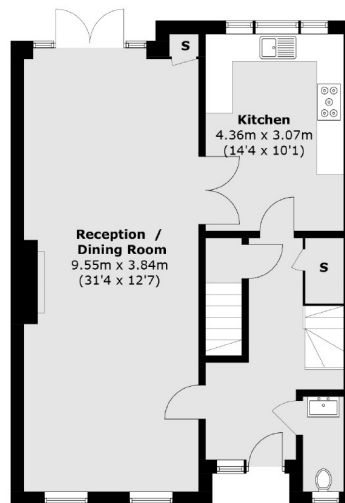
First Floor



Second Floor



Lower Ground Floor



Ground Floor

Total area (approx.): 244.6 sq. m (2632.0 sq. ft)

Robertson Smith & Kempson Hanwell Sales
69 Greenford Avenue,
London, W7 1LL
020 8566 2339
hanwellsales@robertsonsmithandkempson.co.uk

Energy Rating: C. We aim to make our particulars both accurate and reliable. However they are not guaranteed; nor do they form part of an offer or contract. If you require clarification on any points then please contact us, especially if you're traveling some distance to view. Please note that appliances and heating systems have not been tested and therefore no warranties can be given as to their good working order.