



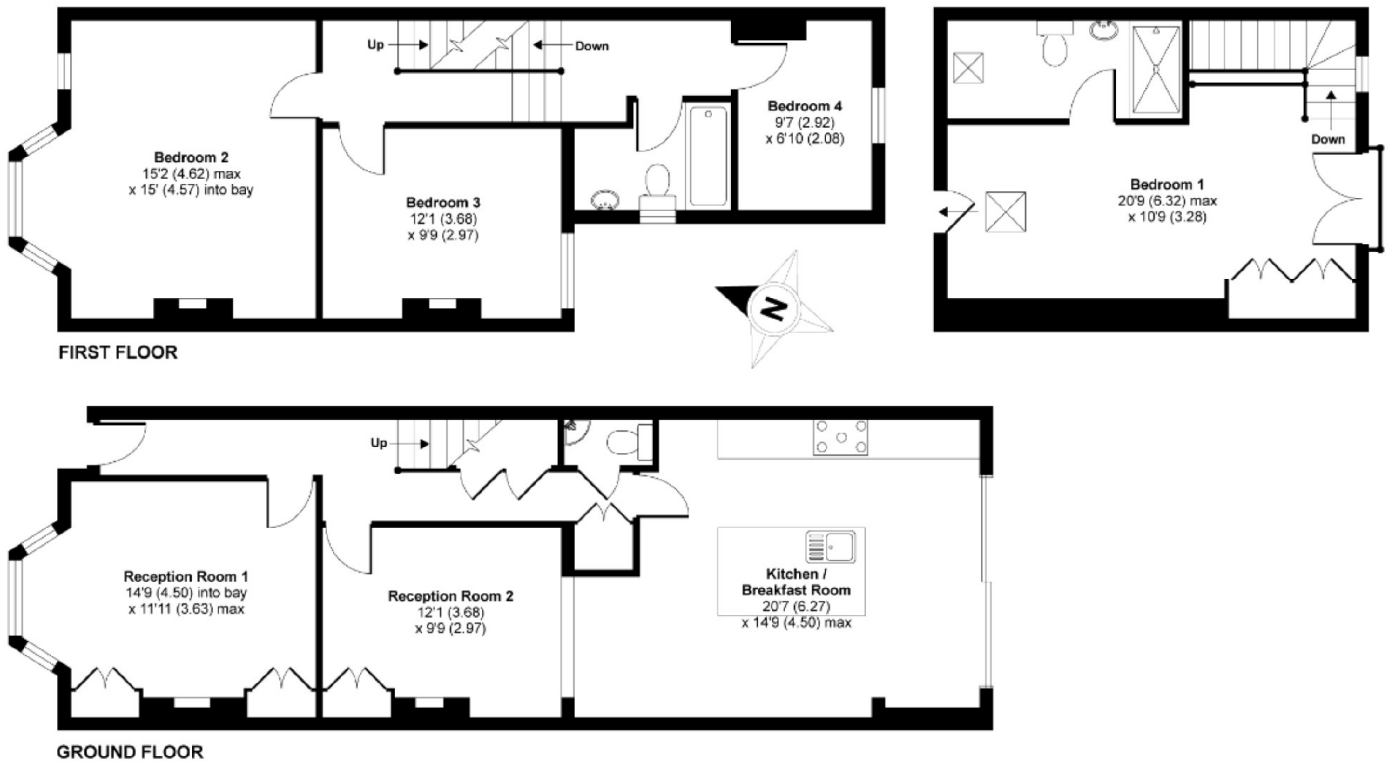
## Hydethorpe Road, SW12

**£3,600 PCM**

A well-presented four bedroom terraced house located on Hydethorpe Road. This property would make a perfect home for professional sharers.

- Reception Room
- Modern Fitted Kitchen
- Four Double Bedrooms
- Modern Fitted Bathroom
- Private Garden
- Close To Balham Station

For further information on the costs associated with renting a property, please pop into our office or visit our website.



APPROX. GROSS INTERNAL FLOOR AREA 1556 SQ FT 144.6 SQ METRES

Hydethorpe Road, London, SW12

Copyright nichecom.co.uk 2014 Produced for Jacksons the Independent Estate Agents REF : 644620

Jacksons Balham  
 8-11 Balham Station Road  
 London  
 SW12 9SG  
 020 8675 6565  
[balham.lettings@jacksonsestateagents.com](mailto:balham.lettings@jacksonsestateagents.com)

Energy Rating: C We aim to make our particulars both accurate and reliable. However they are not guaranteed; nor do they form part of an offer or contract. If you require clarification on any points then please contact us, especially if you're traveling some distance to view. Please note that appliances and heating systems have not been tested and therefore no warranties can be given as to their good working order.