

TATES

Residential Sales & Lettings



Sandringham House, London W14 0UD

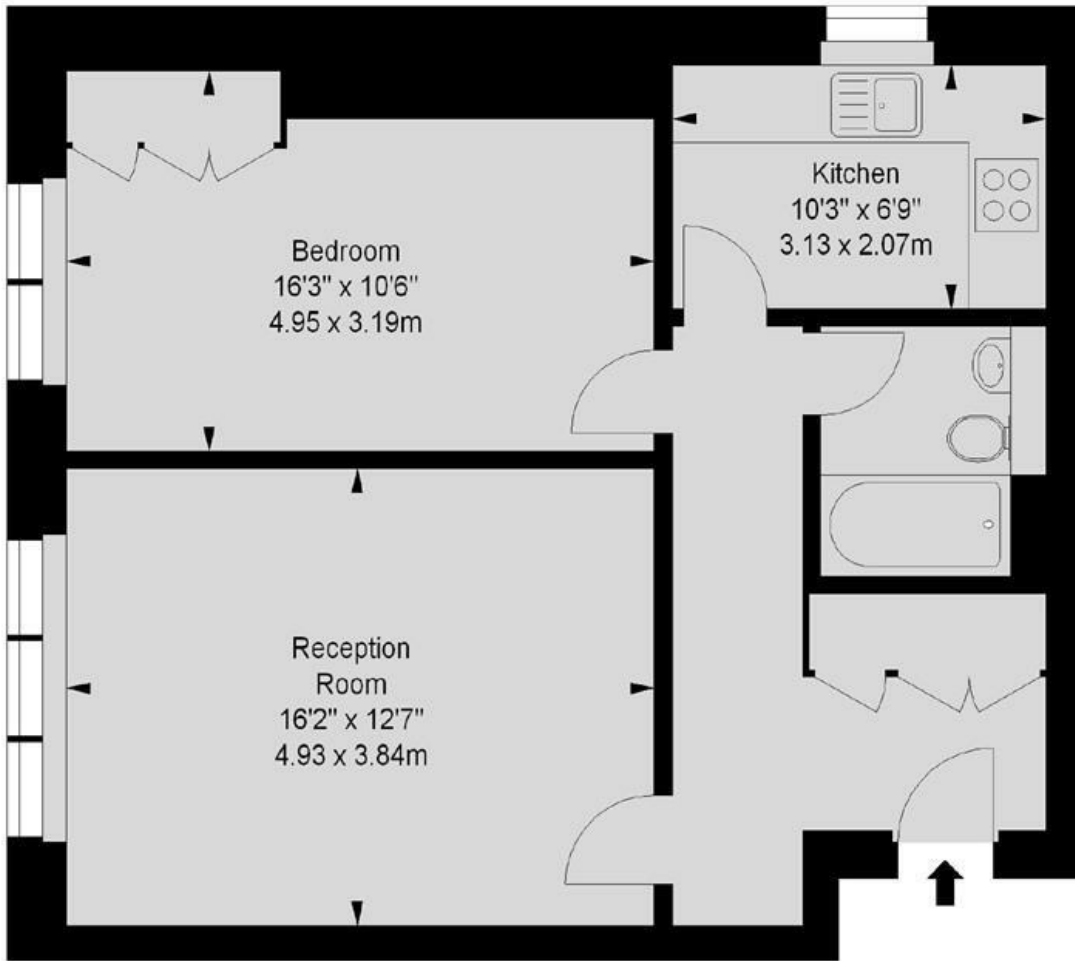
£1,495 Per month

- One double bedroom
- Available early February
- 24 hour porter
- Gated parking available by separate negotiation
- Furnished
- Gated development
- Brook Green
- Energy Efficiency Rating Current Band: C

Sandringham House, W14

Approximate gross internal area

624 sq ft / 58 sq m



Ground Floor

Illustration For Identification Purposes Only. Not To Scale
*Floorplan Drawn According To RICS Guidelines

Energy Efficiency Rating		
	Current	Potential
Very energy efficient - lower running costs		
(92 plus) A		
(81-91) B		
(69-80) C	72	78
(55-68) D		
(39-54) E		
(21-38) F		
(1-20) G		
Not energy efficient - higher running costs		
England & Wales	EU Directive 2002/91/EC	

Whilst these particulars are believed to be correct, no guarantee can be given for the measurements, appliances or services. It is our recommendation that all are tested. These are not intended to form part of any contract. Tates accept no responsibility for their accuracy.

135 Hammersmith Rd London W14 0QL

T. 020 7602 6020 F. 020 7602 9522

mail@tatesestates.co.uk

tatesestates.co.uk

Tates (Agents) Ltd. Registered in England and Wales No. 2356337

Registered Office: 4th Floor Imperial House, 15 Kingsway London WC2B 6U

