

1 Portobello Terrace, North Worple Way, London, SW14 8AF

£3850pcm

Unfurnished

Available August 2021



This is an incredibly deceptive 4 bedroom, 4 bathroom modern family house, you simply have to step beyond the front door to appreciate the space and standard it offers. It was newly built two years ago, is incredibly easy to live in, and it has all the 'mod cons' which includes double glazing and an alarm system.

- 1775 sq ft house
- Double Reception Room
- Open plan kitchen/dining room
- Conservatory
- Master bedroom ensuite
- Three further bedrooms, two ensuite
- One further bathroom
- Cloakroom
- Rear garden
- Large storage area
- Off-street parking
- London Borough of Richmond upon Thames



1 Portobello Terrace, North Worple Way, London, SW14 8AF



Inside is a wonderfully traditional layout of double reception room at the rear leading to a sunny conservatory and a stunning kitchen/dining at the front. Upstairs, there are four double bedrooms and four bathrooms, enough to quieten the most vehement of demands.

North Worple Way is a quiet residential street that runs parallel to the railway line so it is incredibly convenient for both Barnes Bridge and Mortlake Stations. As short walk into Barnes which is the ultimate village within a city, and life long residents become misty-eyed about their childhood spent feeding the ducks on the pond, and sneaking into the Olympic Studios Cinema for a romantic teenage tryst. There are wonderful pubs along the river, and the annual Boat Race is a huge deal. Over 95% of the shops are independent, and it is renowned for its schools, which include St Pauls, Colet Court, The Harrodian, Ibstock, The Swedish School and St Osmonds.

Communications are excellent, with Mortlake, Barnes Bridge and Barnes Station (Waterloo 25 mins) all a short walk away. The A316 and motorway networks are all easily accessed.

57 Sheen Lane,
London, SW14 8AB



020 8876 2222
village-properties.co.uk

TERMS

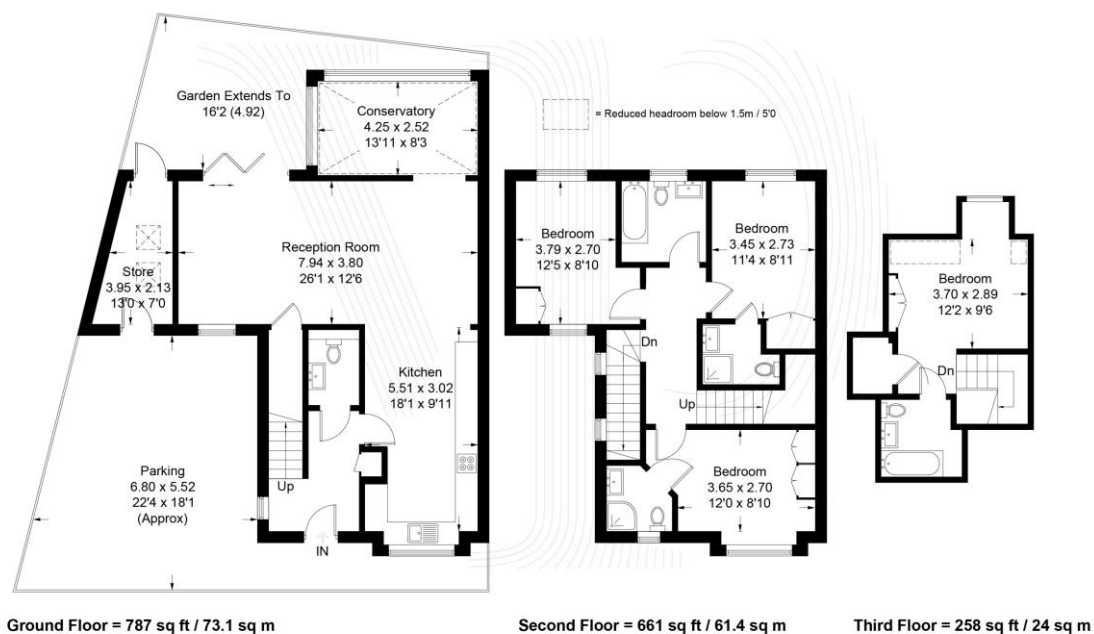
Local Authority:
Royal Borough of Richmond
upon Thames

Council Tax Band – G
2021/2022 - £3264.43 pa

FLOORPLAN

Portobello Terrace, London, SW14

Approximate Gross Internal Area = 158.5 sq m / 1706 sq ft
Store = 6.5 sq m / 70 sq ft
Total = 165 sq m / 1776 sq ft



All measurements are in accordance to the RICS Code Of Measuring Practice. Measurements are approximate & only for illustrative purposes.
© Property Visual Ltd - info@propertyvisual.com - www.propertyvisual.com - 01580 241 428



57 Sheen Lane,
London SW14 8AB



020 876 2222
village-properties.co.uk









